



CATALOGUE

The ammunition for modelling

THE
WEATHERING
MAGAZINE



The original MIG's paints, filters, washes, streakings, pigments and books.



The ammunition for modelling

The difference between an average modeller and excellent modeller is not based on the tools used by each of them, nor is it based on the airbrush, paints, or models that they purchase. What really makes a modeler different from the others is their "experience". The experience is not limited to models, but includes all things in life. Experience makes us evolve, improve, move forward, discover new worlds, and take aim at new targets. In short, our experiences make us better in all aspects of life. Everything a modeler needs to make better models can be discovered through experience. Unfortunately for modelers, experience is always linked to time and time is the most limited resource in our lives.

AMMO of Mig Jimenez is now, without a doubt, the most experienced company in the world in weathering products and modeling effects. All of this experience is now within your reach, in the most comprehensive collection of modeling products available, created and perfected over many years through the hard work and experiences of a modeler: Mig Jimenez.

A lifetime dedicated to the development of techniques for modeling, teaching, and disseminating many techniques and tricks, has resulted in a number of products that have been perfected through natural selection. From the creation of his first company Mig Productions and then AK Interactive: the experience gained through the many years of product development has resulted in the final collection, AMMO: of Mig Jimenez. Here each product is a refinement of the above, where all of the details have been improved, where formulas have been adjusted for maximum quality, performance, and efficiency to meet the demands of even the most experienced and talented modelers.

Only with AMMO you can cover all of your needs, from primers and accurate base colors to more realistic and stunning weathering. You no longer need to waste time looking for mixtures, mixing ratios, or problem solving. You can absorb and utilize all the experience of decades instantly, leaving you free to concentrate on creating your models. And this is what all creative modellers seek in the end: the fastest route between the idea and the final model. AMMO is the highway that connects your ideas to excellent final results.

So the entire AMMO team is proud to bring you only the best, the top of the pyramid, the most powerful ammunition for the most accurate results.

We are the ammunition of modeling and we will be in the field with you now – as we have been in the past - bringing your imagination and your models together.

La diferencia entre un modelista normal y un modelista excelente no está basada en las herramientas usadas por cada uno de ellos. Tampoco en las habilidades, ni en el aerógrafo que use cada uno, ni en las pinturas, ni en la marca de maquetas que cada uno compra. Lo que realmente hace diferente a un modelista es la "experiencia". Pero la experiencia no es sólo propia del modelismo, sino de todas las cosas en la vida. La experiencia nos hace evolucionar, ser mejores, avanzar, descubrir nuevos mundos, nuevas metas. En definitiva, la experiencia nos hace mejores en la vida. Todo lo que un modelista necesita para hacer mejores maquetas es experiencia. Pero la experiencia siempre va unida al tiempo y el tiempo es el elemento más escaso en nuestra vida.

AMMO of Mig Jimenez es ahora mismo, sin ninguna duda, la empresa más experimentada del mundo en productos para envejecido y efectos en el modelismo. Y toda esa experiencia está ahora a tu alcance, en la colección más perfecta de productos para modelismo creada a lo largo de muchos años de esfuerzo y experiencia por un sólo modelista: Mig Jimenez.

Toda una vida dedicada a desarrollar técnicas para modelismo, a enseñar y divulgar multitud de técnicas y trucos, han dado como resultado una serie de productos que han pasado por una selección natural. Desde los orígenes de la creación de su primera empresa Mig Productions y después AK Interactive, el resultado de todos esos años de desarrollo de productos ha desembocado en su colección definitiva, AMMO, donde cada uno de los productos es un refinamiento de todo lo anterior, donde se han cuidado todos los detalles, se han mejorado las fórmulas y se han ajustado todos los aspectos de calidad, producción y eficacia para satisfacer a los modelistas más exigentes.

Solamente con AMMO, podrás cubrir todas tus necesidades, desde las imprimaciones y colores base hasta los acabados más realistas e impresionantes. Ya no necesitarás perder tiempo buscando o haciendo mezclas o solucionando problemas. Podrás absorber toda la experiencia de décadas al instante, para que te puedas concentrar en crear. Y esa creación es lo que todos los modelistas buscan en definitiva, el camino más rápido entre la idea y el modelo final. Y AMMO es la autopista que los une.

Por eso, todo el equipo de AMMO está orgulloso de ofrecerte sólo lo mejor, la punta de la pirámide, la munición más exclusiva para un tirador de élite como tú.

Somos la munición del modelismo y estaremos en el campo de batalla junto a ti. Aun que en realidad siempre hemos estado.

Mig Jimenez

Index

ACRYLICS

SETS	PAG. 4
PRIMERS	PAG. 10
MODULATION SETS	PAG. 11
PAINTS	PAG. 12
CRYSTAL	PAG. 16

WEATHERING ENAMELS

SETS	PAG. 18
WASHES	PAG. 21
STREAKING EFFECTS	PAG. 23
NATURE EFFECTS	PAG. 25
PIGMENTS	PAG. 27
FILTER	PAG. 30

AIRPLANE WEATHERING ENAMELS

SETS	PAG. 31
PANEL LINE WASH	PAG. 34

AUXILIARY PRODUCTS

PAG. 37

BURNISHING PRODUCTS

PAG. 39

PUBLICATIONS

BOOKS	PAG. 40
THE WEATHERING MAGAZINE	PAG. 42

MERCHANDISING

PAG. 49

COLLABORATIONS

PAG. 54

STEP BY STEP

PAG. 56



Acrylics

A.MIG-7107

SOVIET CAMOUFLAGES SET

Soviet tanks colors from 1935 to 1945
Acrylic paints. 6 jars. 17 ml

Acrylic paints set for the Red Army vehicles during the 1935-1945 period. Includes the widely used green khaki 4BO, the 7K sand, 6K brown, and two green colors of inter-war period also seen at the beginning of World War II: the 3BAU and a green protective coating. This set also includes the new product A.MIG 024 for winter camouflage. This product is made from the same formula as the product used in reality by the Soviet Army, so it can be chipped and washed away as it actually occurred in real vehicles.

Included colors:

- A.MIG-019** 4BO RUSSIAN GREEN
- A.MIG-020** 6K RUSSIAN BROWN
- A.MIG-021** 7K RUSSIAN TAN
- A.MIG-022** 3B AU BASIC PROTECTOR ALKIDNO-URETANOVAYA
- A.MIG-023** PROTECTIVE GREEN
- A.MIG-024** WASHABLE WHITE CAMO



A.MIG-7109

MODERN RUSSIAN COLORS SET

Colors used by the Russian AVFs in the actual days
Acrylic paints. 6 jars. 17 ml

Acrylic paints set for paintings modern Russian vehicles. Includes green khaki tone, oil ochre, grey, light green khaki, yellow grey and black. These colors are some of the ones used by the Russian vehicles in the last years. Combinations of these colors are almost endless in the real tanks although in the box we include some suggestions. Modern Russian colors are very difficult to classify and identify mainly due to an extensive range of used colors in recent years. But this choice has been carefully prepared by experts from Ukraine and Russia.

Included colors:

- A.MIG-046** MATT BLACK
- A.MIG-055** OIL OCHRE
- A.MIG-056** GREEN KHAKI
- A.MIG-057** YELLOW GREY
- A.MIG-058** LIGHT GREEN KHAKI
- A.MIG-059** GREY



A.MIG-7100

EARLY GERMAN COLORS SET

Camouflage colors used from 1939 to 1944
Acrylic paints. 6 jars. 17 ml

Set for painting German Army vehicles, especially the colors used from 1939 until the end of 1944. With this set modellers can paint German tanks without complex mixtures or hours of intensive research.

Included colors:

- A.MIG-002** RAL 6003 OLIVGRÜN OPT.2
- A.MIG-008** RAL 7021 DUNKELGRAU
- A.MIG-010** RAL 7028 DUNKELGELB (MID WAR)
- A.MIG-015** RAL 8017 SCHOKOBRAUN
- A.MIG-017** RAL 9001 CREMEWEISS
- A.MIG-018** WAFFEN SS - POLIZEI GRÜN



A.MIG-7101
LATE GERMAN CAMOUFLAGES SET

Camouflage colors used in 1944 and 1945
Acrylic paints. 6 jars of 17 ml.

In late 1944, the German army introduced new rules and new variants in the colors used for painting their vehicles. With this set modellers can paint German late war tanks without complex mixtures thanks to our extensive historical research.

Included colors:

- A.MIG-001** RAL 6003 OLIVGRÜN OPT.1
- A.MIG-003** RAL 6011 RESEDAGRÜN
- A.MIG-004** RAL 6011 B RESEDAGRÜN
- A.MIG-011** RAL 7028 DUNKELGELB AUS '44 DG I
- A.MIG-012** RAL 7028 DUNKELGELB AUS '44 DG III
- A.MIG-014** RAL 8012 ROTBRAUN



A.MIG-7112
TOOLS COLORS SET

Basic colors to paint the tools of your tanks
Acrylic paints. 6 jars. 17 ml

Acrylic set for painting the wooden handles of tools other types of wooden finishes. The set includes three wooden tones, one metallic paint and Bakelite color as used on some tools, such as German WWII shears. Finally, the set includes a helpful dark brown color that can be used to create shadows and grain on wood and rust on rust metal parts.

Includes colors:

- A.MIG-036** OLD WOOD
- A.MIG-037** NEW WOOD
- A.MIG-038** LIGHT WOOD
- A.MIG-043** SHADOW RUST
- A.MIG-045** GUN METAL
- A.MIG-913** RED BROWN BASE



A.MIG-7113
YOM KIPPUR WAR COLORS SET

Egyptian and Syrian camouflage colors from 1967 to today
Acrylic paints. 6 jars. 17 ml

Acrylic set with the appropriate colors for painting Syrian and Egyptian vehicles from 1967 to present day; especially those used in the Yom Kippur War in 1973. The colors in this set are completely researched, allowing modellers to paint attractive Arab tanks camouflages without complex mixtures.

Includes colors:

- A.MIG-029** DESERT SAND
- A.MIG-030** SAND YELLOW
- A.MIG-911** GREY SHINE
- A.MIG-914** RED BROWN LIGHT
- A.MIG-915** DARK GREEN
- A.MIG-931** RUSSIAN DARK BASE



A.MIG-7105
TIRES & TRACKS

Acrylic paint set to paint rubber tires and rusty and dusty tracks.
Acrylic paints. 6 jars. 17 ml

Acrylic set for painting rubber tires and tracks for all vehicles. This set includes two rubber tones, A.Mig-032 Satin Black for new tires and rubber surfaces, and A.Mig-033 Rubber & Tires for old rubber surfaces. Use A.Mig-034 Rust Tracks and A.Mig-035 Dark Tracks to paint tracks of all kinds. This set also includes A.Mig-072 Dust and A.Mig-073 Earth to add dirt effects on the wheels and trucks.

Included colors:

- A.MIG-032** SATIN BLACK
- A.MIG-033** RUBBER & TIRES
- A.MIG-034** RUST TRACKS
- A.MIG-035** DARK TRACKS
- A.MIG-072** DUST
- A.MIG-073** EARTH



A.MIG-7106 RUST EFFECTS COLORS

Acrylic paint set for rust, chipping and all corrosion effects.
Acrylic paints. 6 jars of 17 ml.

Acrylic water based paint set for rust, chipping, and all types of corrosion effects. The set includes five rusty tones with a matt finish to create a rusty surface. It also includes A.Mig-044 which is a helpful dark brown color in a satin finish to obtain dark/rusted steel chipping effects for tanks and any other kind of steel vehicles.

Included colors:

- A.MIG-039** LIGHT RUST
- A.MIG-040** MEDIUM RUST
- A.MIG-041** DARK RUST
- A.MIG-042** OLD RUST
- A.MIG-043** SHADOW RUST
- A.MIG-044** CHIPPING



A.MIG-7110 WW I & WW II FRENCH CAMOUFLAGE COLORS

Accurate colors for French WW I & WW II.
Acrylic paints. 6 jars. 17 ml

Acrylic water based paint set for painting French vehicles from 1916 to 1940. This set includes the six most common colors used by the French army with Scale Reduction Effect, which allows us to obtain the correct color on our scale models.

Included colors:

- A.MIG-060** PALE GREEN
- A.MIG-061** WARM SAND-YELLOW
- A.MIG-062** FRENCH BLUE
- A.MIG-063** PALE GREY
- A.MIG-064** EARTH BROWN
- A.MIG-065** FOREST GREEN



A.MIG-7111 WW I BRITISH & GERMAN COLORS

Accurate colors for WW I British & German.
Acrylic paints. 6 jars of 17 ml.

Acrylic water based paint for painting WW I German and UK vehicles.

This set includes:

- **A.MIG 077** Dull Green, **A.MIG 078** Ochre Earth and **A.MIG-079** Clay Brown for German vehicles.
- **A.MIG 074** Green Moss for most of the UK vehicles during WW I.
- **A.MIG-075** Stone Grey, **A.MIG-076** Brown Soil and **A.MIG 078** Ochre Earth for Solomon paint scheme of UK vehicles deployed in Europe.

Paints include Scale Reduction Effect, which allows us to obtain the correct color on our models.



A.MIG-7108 INTERIOR COLORS: GERMAN TANKS

Accurate colors for interiors of German Tanks.
Acrylic paints. 6 jars of 17 ml.

Specific set for painting the interior colors of WWII German vehicles.

Included colors:

- A.MIG-014** RAL 8012 Rotbraun: used for the floor and other areas such as engine deck etc.
- A.MIG-017** RAL 9001 Cremeweiß: Standard color to paint interiors of any close-casemate German vehicle.
- A.MIG-080** BRIGHT GREEN: Color used to for gear boxes and other mechanical parts.
- A.MIG-096** Crystal PERISCOPE GREEN (and tail light on): Crystal product perfect to paint periscopes.
- A.MIG-908** Grey Base: color used on engines, transmissions, levers, and other mechanical parts.
- A.MIG-912** Red Brown Shadow: color to paint any leather surface such as seats, head protectors, etc.



A.MIG-7114 NATO COLORS SET

Smart set to paint NATO vehicles
Acrylic paints. 3 jars. 17 ml

With this set modellers can paint authentic three-color NATO camouflage patterns easily without complex mixture.

Include colors:

- A.MIG 046** BLACK
- A.MIG 084** NATO GREEN
- A.MIG 085** NATO BROWN



A.MIG-7115 IDF COLORS SET

Authentic colors for IDF vehicles
Acrylic paints. 3 jars. 17 ml

Acrylic paint set for painting Israel Defense Force vehicles. Finally, modellers can paint Israeli vehicles without complex mixtures and hours of research. Includes 3 tones used from the early years as an operational force to the present day. Colors include: **A.MIG-066** IDF SINAY GREY '82 which is currently in use, the **A.MIG-067** IDF SAND GREY '73 as used from the 6 Days War to the Yom Kippur War and **A.MIG-068** IDF GREEN as used at the IDF's inception.



A.MIG-7102 AFRIKA KORPS SMART ACRYLIC SET

Accurate colors for DAK. 3 jars 17ml
Acrylic paints. 3 jars. 17 ml

Acrylic paint set for painting Deutsche Afrika Korps vehicles from March 1942 to the bitter end in Tunisia. Finally, modellers can paint DAK vehicles without complex mixtures and hours of research.

Include colors:

- A.MIG-008** RAL 7021 DUNKELGRAU
- A.MIG-009** RAL 7027 SANDGRAU
- A.MIG-016** RAL 8020 GELBBRAUN



A.MIG-7104 BUNDESWEHR AFGHANISTAN SCHEME SMART ACRYLIC SET

Accurate colors for Bundeswehr. 3 jars 17ml
Acrylic paints. 3 jars. 17 ml

With this set modellers can paint authentic three-color Bundeswehr camouflage pattern for Afghanistan easily without complex mixture.

Include colors:

- A.MIG 026** RAL 8031 F9 GERMAN SAND BROWN
- A.MIG 027** RAL8031 F9 GERMAN SAND BEIGE
- A.MIG 028** RAL7050 F7 GERMAN GREY BEIGE



A.MIG-7103 MODERN SYRIAN CAMOUFLAGE SET

Accurate colors for Syrian vehicles
Acrylic paints. 3 jars. 17 ml

Acrylic paint set for the modern Syrian army vehicles, this set allows for accurate painting of the most common colors. Modellers will be able to paint these vehicles without complex mixtures and hours of research.

Include colors:

- A.MIG 030** SAND YELLOW
- A.MIG 912** RED BROWN SHADOW
- A.MIG 931** RUSSIAN DARK BASE



A.MIG-7135 VIETNAM COLORS SET

Accurate colors for Vietnam War vehicles
Acrylic paints. 3 jars. 17 ml

Acrylic paint set with accurate colors for the vehicles of Vietnam War and Cold War. Modellers will be able to paint these vehicles without complex mixtures and hours of research.

Include colors:

- A.MIG 081** US OLIVE DRAB (FS 24087)
- A.MIG 082** APC INTERIOR GREEN
- A.MIG 083** ZASHCHITNIY ZELENO (Russian Postwar Green)



A.MIG-7136 RUSSIAN WWII COLORS SET

Accurate colors for Russian WW II vehicles
Acrylic paints. 3 jars. 17 ml

Acrylic paint set with accurate colors for the 3 most common paints used by Russian vehicles during WW II. Modelers can paint these vehicles without complex mixtures and hours of research.

- Include colors:
A.MIG-019 480 RUSSIAN GREEN
A.MIG-020 6K RUSSIAN BROWN
A.MIG-021 7K RUSSIAN TAN



A.MIG-7137 WW II JAPANESE AFV EARLY COLORS

Authentic colors for Japanese vehicles
Acrylic paints. 4 jars. 17 ml

This 4 jars set include the camouflage colors used by Imperial Japanese Army during the first stages of World War Two. These colors were used both in China and the Pacific islands from 1937 to 1942.

- Include colors:
A.MIG-069 BLUE GREEN
A.MIG-070 MEDIUM BROWN
A.MIG-071 KHAKI
A.MIG-048 YELLOW



A.MIG-7139 AFGHANISTAN WAR (1979-1989)

Authentic colors for Russian vehicles in Afghanistan
Acrylic paints. 3 jars. 17 ml

This set contains the 3 colors most used by USSR Army for desert theaters following 1970 ordinances. For example these colors were used during the Afghanistan war during 1979-89.

- Include colors:
A.MIG-057 Yellow Grey. Common camouflage color in use in Afghanistan and also today.
A.MIG-061 Warm Sand-Yellow. Sand camouflage color. This paint was also used as base color with green camouflage spots painted over it.
A.MIG-932 Russian Base. Standard color for USSR forces of this period.



A.MIG-7140 BRITISH 1939-45 EUROPEAN COLORS

Authentic colors for British vehicles in ETO
Acrylic paints. 4 jars. 17 ml

With this set the modeler can paint British vehicles, from 1939 to 1945 in the European Front (ETO), without hours of research or complex mixtures. From a Matilda Mk I to a late war Firefly, the modeler can find the right colors in this set.

- Include colors:
A.MIG-110 SCC 1A (BRITISH BROWN 1941-42) Camouflage color for 1941-42 period.
A.MIG-111 SCC 2 (BRITISH 1941-42 SERVICE DRAB) Base color for 1942-44 period. Also used during 1941.
A.MIG-112 SCC 15 (BRITISH 1944-45 OLIVE DRAB) Used as unique base color since 1944.
A.MIG-113 KHAKI GREEN N°3 (BRITISH 1939-42) Base color for 1939-41 period. Also used during 1942.



These products are acrylic and are formulated for maximum performance both with brush or airbrush and the Scale Effect Reduction will allow us to apply the correct color on our models. Water soluble, odorless and non-toxic. Shake well before each use. We recommend A.MIG-2000 Acrylic Thinner for a correct thinning. Dries completely in 24 hours.



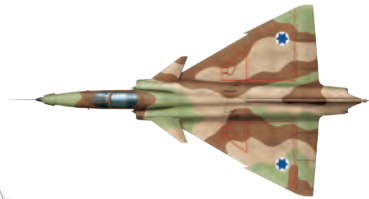
A.MIG-7200 IAF DESERT COLORS

Accurate colors for IAF Federal Standard colors.
Acrylic paints. 4 jars. 17 ml

First range of high quality paints with FEDERAL STANDARD references for aircrafts. This pack of 4 colors includes the three camouflage colors for most of Israeli fighters and the color for lower parts, a characteristic gray. The colors are based on FEDERAL STANDARD references and colors are accurate.

Include colors:

- A.MIG-200** FS 33531
- A.MIG-201** FS 34424 Light Gray
- A.MIG-202** FS 30219 Tan
- A.MIG-203** FS 36375 Light Compass Ghost Gray



A.MIG-7201 US NAVY COLORS from 80's to present

Accurate colors for USN Federal Standard colors.
Acrylic paints. 4 jars. 17 ml

High quality paints with FEDERAL STANDARD references for aircrafts. This pack includes the four colors most widely use by USN from 80's to present. This includes the initial 3 tone and current 2 tone camouflages of F-18, the tactical and the late schemes for F-14... etc. The colors are based on FEDERAL STANDARD references and colors are accurate, although slightly clarified to offset the effect of any scale model.

Include colors:

- A.MIG-203** FS 36375 Light Compass Ghost Gray
- A.MIG-208** FS 36320 Dark Compass Ghost Gray
- A.MIG-209** FS 36495 Light Gray
- A.MIG-210** FS 35237 Gray Blue



A.MIG-7202 USAF COLORS Grey Modern Jets

Accurate colors for USAF Federal Standard colors.
Acrylic paints. 4 jars. 17 ml

High quality paints with FEDERAL STANDARD references for aircrafts. This pack of 4 colors includes the grey colors most widely use by USAF jets. This includes any F-15, F-16 early in 3 tones, F-4 Phantom II in Hill 1 scheme... etc. The colors are based on FEDERAL STANDARD references and colors are accurate, although slightly clarified to offset the effect of any scale model.

Include colors:

- A.MIG-203** FS 36375 Light Compass Ghost Gray
- A.MIG-204** FS 36118 Medium Gunship Gray
- A.MIG-208** FS 36320 Dark Compass Ghost Gray
- A.MIG-211** FS 36270 Medium Gray



A.MIG-7203 UK AIRCRAFT COLORS from 50's to present

Accurate BS colors for UK modern aircrafts.
Acrylic paints. 4 jars. 17 ml

High quality paints for aircrafts. The set includes the equivalent Federal Standard colors for BRITISH STANDARD used by RAF since 50's. This pack of 4 colors contain all most common colors, so we can paint any Harrier, Gloster Javelin, Tornado, Phantom, Buccaneer... The colors are based on references BRITISH STANDARD and are accurate colors, although slightly clarified to offset the effect of any scale model.

Include colors:

- A.MIG-204** FS 36118 Medium Gunship Gray
- A.MIG-205** FS 26173 (BS 638)
- A.MIG-206** FS 34079 (BS 641)
- A.MIG-207** FS 36314 (BS 626)



A.MIG-7204 MiG & SU COLORS Grey & Green Fighters

Accurate colors grey MiG and SU jets.
Acrylic paints. 4 jars. 17 ml

High quality paints for aircrafts. The set includes the equivalent Federal Standard colors for greys used on MiG and SU jets. This pack of 4 colors contain all most common colors, so we can paint MiG-21, MiG-29, SU-24... and radomes of most of the aircrafts. The colors are accurate colors, although slightly clarified to offset the effect of any scale model.

Include colors:

- A.MIG-203** FS 36375 Light Compass Ghost Gray
- A.MIG-204** FS 36118 Medium Gunship Gray
- A.MIG-212** FS 26373 Silver Grey
- A.MIG-213** FS 24277 Green



Model by George Roidis

A.MIG-2002 GREY PRIMER

High quality Primer for Brushes and Airbrush.
60 ml.

Our water based primer available in a medium grey color and perfectly suited for use under all types of color finishes. Our primer has excellent adhesion properties and soft-satin finish ensures that paint will grip perfectly and every surface detail will remain crisp and clean.



A.MIG-2003 DARK YELLOW PRIMER

High quality Primer for Brushes and Airbrush.
60 ml.

Our water based primer available in a Dark Yellow perfectly suited for use under German Dunkelgelb vehicles and similar colors. Our primer has excellent adhesion properties and soft-satin finish ensures that paint will grip perfectly and every surface detail will remain crisp and clean.



A.MIG-2004 WHITE PRIMER

High quality Primer for Brushes and Airbrush.
60 ml.

Our water based primer available in a white color perfectly suited for use under all types of color finishes. Our primer has excellent adhesion properties and soft-satin finish ensures that paint will grip perfectly and every surface detail will remain crisp and clean.



A.MIG-2005 BLACK PRIMER

High quality Primer for Brushes and Airbrush.
60 ml.

Our water based primer available in a black color perfectly suited for use under all types of color finishes. Our primer has excellent adhesion properties and soft-satin finish ensures that paint will grip perfectly and every surface detail will remain crisp and clean.



A.MIG-2006 RUST PRIMER

High quality Primer for Brushes and Airbrush.
60 ml.

Our water based primer available in a dark brown rust color perfectly suited for use under all types of paints. Our primer has excellent adhesion properties and soft-satin finish ensures that paint will grip perfectly and every surface detail will remain crisp and clean. It's perfect for use as base on rust effects or to chip later colors showing rust chippings.



A.MIG-2007 TRACKS PRIMER

High quality Primer for Brushes and Airbrush.
60 ml.

Acrylic primer in a dark brown color; ideal as a base for tracks. Our primer has excellent adhesion and smooth matte finish that ensures that every detail of the surface will stay crisp and the paint will grip over smoothly.



A.MIG-2008 DESERT SAND PRIMER

High quality Primer for Brushes and Airbrush.
60 ml.

Acrylic primer in sand color; ideal as a base for any desert camouflage or color. Our primer has excellent adhesion and smooth matte finish that ensures that every detail of the surface will stay crisp and the paint will grip over smoothly.



A.MIG-2009 RUSSIAN GREEN PRIMER

High quality Primer for Brushes and Airbrush.
60 ml.

Acrylic primer in dark green color; ideal as a base for any green color. Our primer has excellent adhesion and smooth matte finish that ensures that every detail of the surface will stay crisp and the paint will grip over smoothly.



A.MIG-7000 DUNKELGELB MODULATION SET

Acrylics Colors Set. 4 jars. 17 ml

This set includes 4 acrylic colors to paint modulation and light effects on any vehicle in Dunkelgelb color quickly and easily. This simplified set includes the colors necessary for this technique, saving on unnecessary complexity and jars.

Include colors:

- A.MIG-901** Dunkelgelb Dark Base
- A.MIG-902** Dunkelgelb Base
- A.MIG-903** Dunkelgelb Light Base
- A.MIG-904** Dunkelgelb High Light



A.MIG-7001 DUNKELGRAU MODULATION SET

Acrylics Colors Set. 4 jars. 17 ml

This set includes 4 acrylic colors to paint modulation and light effects on any vehicle in Dunkelgrau color quickly and easily. This simplified set includes the colors necessary for this technique, saving on unnecessary complexity and jars.

Include colors:

- A.MIG-907** Grey Dark Base
- A.MIG-908** Grey Base
- A.MIG-909** Grey Light Base
- A.MIG-910** Grey High Light



A.MIG-7002 RED PRIMER MODULATION SET

Acrylics Colors Set. 4 jars. 17 ml

This set includes 4 acrylic colors to paint modulation and light effects on any vehicle in rotbraun or primer color quickly and easily. This simplified set includes the colors necessary for this technique, saving on unnecessary complexity and jars.

Include colors:

- A.MIG-919** Red primer Dark Base
- A.MIG-920** Red primer Base
- A.MIG-921** Red primer Light Base
- A.MIG-922** Red primer High Lights



A.MIG-7003 OLIVE DRAB MODULATION SET

Acrylics Colors Set. 4 jars. 17 ml

This set includes 4 acrylic colors to paint modulation and light effects on any vehicle in Olive Drab color quickly and easily. This simplified set includes the colors necessary for this technique, saving on unnecessary complexity and jars.

Include colors:

- A.MIG-925** Olive Drab Dark Base
- A.MIG-926** Olive Drab Base
- A.MIG-927** Olive Drab Light Base
- A.MIG-928** Olive Drab High Lights



A.MIG-7004 RUSSIAN 4BO MODULATION SET

Acrylics Colors Set. 4 jars. 17 ml

This set includes 4 acrylic colors to paint modulation and light effects on any Soviet vehicle in 4BO color quickly and easily. This simplified set includes the colors necessary for this technique, saving on unnecessary complexity and jars.

Include colors:

- A.MIG-931** Russian Dark Base
- A.MIG-932** Russian Base
- A.MIG-933** Russian Light Base
- A.MIG-934** Russian High Lights



With just 4 colors modeler may use this advanced technique without the need for complicated mixtures and having always the colors used in any step of the process. These acrylic and are formulated for maximum performance both with brush or airbrush. 4 colors in 17 ml jars. Water soluble, odorless and non-toxic. Shake well before each use. Each jar includes a stainless steel agitator to facilitate mixture. We recommend MIG -2000 Acrylic Thinner for a correct thinning. Dries completely in 24 hours. Include colors:



NEW JARS YELLOW CAPS STAINLESS STIRRING BALLS



Shake & Paint!

From now on, all new colors with yellow cap containing a ball to improve agitation, for the same price.

*Your colors
always flow*

We also want to announce that we continue to improve our products through constant innovation. This time we are the first brand to include an agitator in our acrylic paints. This industry leading innovation allows for quick and convenient color mixture, even and consistent every time. These exciting new products are easily distinguishable by their new yellow cap. Each jar includes a stainless steel agitator to facilitate mixture.

The chart below displays our current range of acrylic camouflage and effects colors. More options will be available in the future as we continue to expand the range. If you cannot find a specific color here, check our web site for the last updates: www.migjimenez.com. Remember that many of our colors have RAL or Federal Standard equivalence.

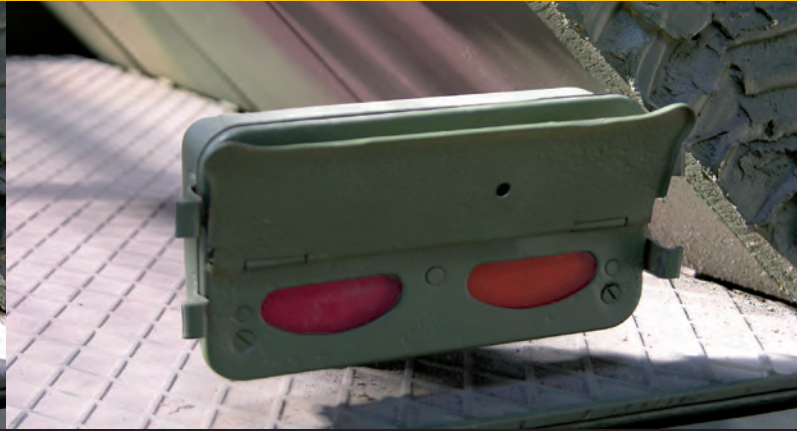
Reference	Color name	RAL/RLM/FS	Description and other applications
A.MIG-001	OLIVGRÜN OPT.1	RAL 6003	WW II German camo. Vegetation. Iraqui camouflage.
A.MIG-002	OLIVGRÜN OPT.2	RAL 6003	WW II German camo Vegetation. Iraqui camouflage.
A.MIG-003	RESEDAGRÜN	RAL 6011	1945 German camo. SS dot uniform camo, summer grass.
A.MIG-004	B RESEDAGRÜN	RAL 6011	1945 German camo. SS dot uniform camo, spring light vegetation. New Iraq Army camo.
A.MIG-005	GRAUGRÜN	RAL 7008	Camo for DAK vehicles operating in North Africa in 1941-1942.
A.MIG-006	GRAUGRÜN OPT.2	RAL 7008	Greenish RAL 7008, which appears on some Tiger I in Tunisia.
A.MIG-007	DUNKELBRAUN	RAL 7017	Camo applied over RAL 7021 in 1/3 of the vehicle (1935-1940).
A.MIG-008	DUNKELGRAU	RAL 7021	Base color for German vehicles until February 1943
A.MIG-009	SANDGRAU	RAL 7027	DAK camo 1942-4943 over RAL 8020. Dusty roads.
A.MIG-010	DUNKELGELB (MID WAR)	RAL 7028	Standard base color used on German vehicles from 1943 to 1944.
A.MIG-011	DUNKELGELB AUS '44 DG I	RAL 7028	1945 German camo. Some IDF vehicles.
A.MIG-012	DUNKELGELB AUS '44 DG III	RAL 7028	1945 German camo. Old dry wood.
A.MIG-013	GELBBRAUN	RAL 8000	Early DAK base color. Earth roads.
A.MIG-014	ROTBRAUN	RAL 8012	German primer. 1945 German camo. Autumn leaves.
A.MIG-015	SCHOKOBRAUN	RAL 8017	German camo 1943-1945. Iraqui brown camo color.
A.MIG-016	GELBBRAUN	RAL 8020	DAK color 1943-1943. Syrian camouflage color. US camouflage in Korea.
A.MIG-017	CREMEWEISS	RAL 9001	Interiors.
A.MIG-018	WAFFEN SS - POLIZEI GRÜN		Authentic green color used by Waffen SS and Polizei units.
A.MIG-019	RUSSIAN GREEN	4BO	
A.MIG-020	RUSSIAN BROWN	6K	
A.MIG-021	RUSSIAN TAN	7K	
A.MIG-022	ALKIDNO-URETANOVAYA	3B AU	
A.MIG-023	PROTECTIVE GREEN		
A.MIG-024	WASHABLE WHITE CAMO		Authentic Russian WW II white washable paint. Removable with water.
A.MIG-025	US MODERN VEHICLES	FS 33446	The most important and often used US camo color for the desert.
A.MIG-026	GERMAN SAND BROWN	RAL 8013 F9	Desert color modern German Army.
A.MIG-027	GERMAN SAND BEIGE	RAL 1039 F9	Desert color modern German Army.
A.MIG-028	GERMAN GREY BEIGE	RAL 1039 F7	Desert color modern German Army.
A.MIG-029	DESERT SAND		Sand color for modern Iraqui army.
A.MIG-030	SAND YELLOW	BS 381c 361	BS 381c 361 Modern British vehicles.
A.MIG-031	SPANISH GREEN-KHAKI		Actual spanish Army color.
A.MIG-032	SATIN BLACK		Black leather.
A.MIG-033	RUBBER & TIRES		Old dry wood.
A.MIG-034	RUST TRACKS		Light leather.
A.MIG-035	DARK TRACKS		Dark brown leather.
A.MIG-036	OLD WOOD		Color for depicting the accumulation of dust on tracks and tires.
A.MIG-037	NEW WOOD		Color for the accumulation of dry light mud on tracks and tires.
A.MIG-038	LIGHT WOOD		Natural color creating realistic decks and authentic wood. Acrylic.
A.MIG-039	LIGHT RUST		Light orange acrylic perfect for painting the most authentic fresh rust.
A.MIG-040	MEDIUM RUST		For the medium tones of authentic rust tones.
A.MIG-041	DARK RUST		Perfect for the darkest shades of fresh rust.
A.MIG-042	OLD RUST		For old, rusty surfaces. Also for Leather.

Reference	Color name	RAL/RLM/FS	Description and other applications
A.MIG-043	SHADOW RUST		Perfect for the painting old and dark rust surfaces.
A.MIG-044	CHIPPING		For depicting the most realistic deep scratches and chipping effects.
A.MIG-045	GUN METAL		For realistic gun barrels, metallic tools and other metal effects.
A.MIG-046	MATT BLACK	MS-17	Perfect to obtain dark shades on other colors and paint details.
A.MIG-047	WHITE		Perfect to obtain light shades on other colors and paint details.
A.MIG-048	YELLOW		Saturated warm yellow paint for paint details or mix with other colors.
A.MIG-049	RED		Saturated red paint for paint details or mix with other colors.
A.MIG-055	OIL OCHRE		Modern Russian camo.
A.MIG-056	GREEN KHAKI	KHS-5146	Modern Russian camo. Moss and deep vegetation.
A.MIG-057	YELLOW GREY	PKHV-4	Modern Russian camo. Old dry wood.
A.MIG-058	LIGHT GREEN KHAKI	PKHV-512	Modern Russian camo. Spring vegetation.
A.MIG-059	GREY	KHV-16	Modern Russian camo. Ships and sci-fi.
A.MIG-060	PALE GREEN		French camos 1916-1940. Light spring vegetation.
A.MIG-061	WARM SAND-YELLOW		French camos 1916-1940. Sand.
A.MIG-062	FRENCH BLUE		French camos 1916-1940.
A.MIG-063	PALE GREY		French camos 1916-1940. Sci-fi subjects.
A.MIG-064	BROWN EARTH		French camos 1916-1940. New leather.
A.MIG-065	FOREST GREEN		French camos 1916-1940. Vegetation.
A.MIG-066	IDF SINAI GREY '82		IDF camo since 1982. Dark stones.
A.MIG-067	IDF SAND GREY '73		IDF camo since 1973. Dust and dry earth.
A.MIG-068	IDF GREEN		Early IDF camo.
A.MIG-072	DUST		Dust. Stones.
A.MIG-073	EARTH		Earth. Dark wood and trunks.
A.MIG-074	GREEN MOSS		Most of WW I British vehicles.
A.MIG-075	STONE GREY		Solomon scheme for WW I British vehicles in Europe. Sci-fi fighters
A.MIG-076	BROWN SOIL		Solomon scheme for WW I British vehicles in Europe.
A.MIG-077	DULL GREEN		German WW I color.
A.MIG-078	OCHRE EARTH		German WW I color. Flesh.
A.MIG-079	BROWN CLAY		WW I German and Solomon scheme for British vehicles in Europe.
A.MIG-083	ZASHCHITNIY ZELENO	XB 518	
A.MIG-084	NATO GREEN		Authentic NATO green color for modern vehicles and camouflage.
A.MIG-085	NATO BROWN		Authentic NATO green color for modern vehicles and camouflage.
A.MIG-089	MATT VARNISH		Acrylic Matt Varnish formulated for maximum airbrush performance.
A.MIG-090	SATIN VARNISH		Acrylic Matt Varnish formulated for maximum airbrush performance.
A.MIG-091	GLOSSY VARNISH		Acrylic Glossy Varnish for maximum airbrush performance.
A.MIG-092	CRYSTAL GREEN		Green lights, position lights and periscopes.
A.MIG-093	CRYSTAL RED		Red lights, position lights.
A.MIG-094	CRYSTAL GLASS		Dials, bulbs and crystals.
A.MIG-095	CRYSTAL SMOKE		Periscopes. Dark bulbs.
A.MIG-096	CRYSTAL PERISCOPE GREEN		Periscopes. Lights.
A.MIG-097	CRYSTAL ORANGE		Position lights, optics and signals.
A.MIG-098	CRYSTAL LIGHT BLUE		Canopies, lights and tint crystals.
A.MIG-099	CRYSTAL BLACK BLUE		German position lights (turn off).



Reference	Color name	RAL/RLM/FS	Description and other applications
A.MIG-105	WASHABLE DUST	RAL 8000	
A.MIG-106	WASHABLE SAND	RAL 8020	
A.MIG-200	MIDDELSTONE	FS 33531	
A.MIG-201	LIGHT GREY GREEN	FS 34424	
A.MIG-202	TAN	FS 30219	
A.MIG-203	LIGHT COMPASS GHOST GREY	FS 36375	
A.MIG-900	DUNKELGELB SHADOW		German Dunkelgray modulation.
A.MIG-901	DUNKELGELB DARK BASE		German Dunkelgray modulation.
A.MIG-902	DUNKELGELB BASE		German Dunkelgray modulation.
A.MIG-903	DUNKELGELB LIGHT BASE		German Dunkelgray modulation. Modern Egyptian base.
A.MIG-904	DUNKELGELB HIGH LIGHT		German Dunkelgray modulation. All eras Egyptian color. Dry grass.
A.MIG-905	DUNKELGELB SHINE		German Dunkelgray modulation. Ivory and skulls.
A.MIG-906	GREY SHADOW		German Dunkelgray modulation.
A.MIG-907	GREY DARK BASE		German Dunkelgray modulation.
A.MIG-908	GREY BASE		German Dunkelgray modulation.
A.MIG-909	GREY LIGHT BASE		German Dunkelgray modulation. Dark Sci-fi fighters.
A.MIG-910	GREY HIGH LIGHT		German Dunkelgray modulation. Dark Sci-fi fighters.
A.MIG-911	GREY SHINE		German Dunkelgray modulation. Sci-fi space ships.
A.MIG-912	RED BROWN SHADOW		German camouflage modulation.
A.MIG-913	RED BROWN BASE		German camouflage modulation.
A.MIG-914	RED BROWN LIGHT		German camouflage modulation.
A.MIG-915	DARK GREEN		German camouflage modulation.
A.MIG-916	GREEN BASE		German camouflage modulation.
A.MIG-917	LIGHT GREEN		German camouflage modulation.
A.MIG-918	RED PRIMER SHADOW		German primer modulation.
A.MIG-919	RED PRIMER DARK BASE		German primer modulation.
A.MIG-920	RED PRIMER BASE		German primer modulation. Train wagons. Dark varnish wood.
A.MIG-921	RED PRIMER LIGHT BASE		German primer modulation. Russian ships deck.
A.MIG-922	RED PRIMER HIGH LIGHTS		German primer modulation. Red leather.
A.MIG-923	RED PRIMER SHINE		German primer modulation.
A.MIG-924	OLIVE DRAB SHADOW		US Olive Drab modulation.
A.MIG-925	OLIVE DRAB DARK BASE		US Olive Drab modulation.
A.MIG-926	OLIVE DRAB BASE		US Olive Drab modulation.
A.MIG-927	OLIVE DRAB LIGHT BASE		US Olive Drab modulation.
A.MIG-928	OLIVE DRAB HIGH LIGHTS		US Olive Drab modulation.
A.MIG-929	OLIVE DRAB SHINE		US Olive Drab modulation.
A.MIG-930	RUSSIAN SHADOW		Russian 4BO modulation. Lybian camouflage color.
A.MIG-931	RUSSIAN DARK BASE		Russian 4BO modulation.
A.MIG-932	RUSSIAN BASE		Russian 4BO modulation. Vegetation.
A.MIG-933	RUSSIAN LIGHT BASE		Russian 4BO modulation. Train wagons. Wooden fences. Doors.
A.MIG-934	RUSSIAN HIGH LIGHT		Russian 4BO modulation. Wooden fences. Doors. Vegetation highlights.
A.MIG-935	RUSSIAN SHINE		Russian 4BO modulation. Faded green paint.

Crystal



A.MIG-092
CRYSTAL GREEN
17 ml.

Special acrylic paint to obtain the finish of a glass surface easily. It can be applied directly from the bottle and cleaned easily with water. This product is odorless and is not harmful. Its green color is perfect for a multitude of green glass surfaces such as position lights for planes and tanks.



A.MIG-093
CRYSTAL RED
17 ml.

Special acrylic paint to obtain the finish of a glass surface easily. It can be applied directly from the bottle and cleaned easily with water. This product is odorless and is not harmful. Its red color is perfect for a multitude of red glass surfaces such as position lights of planes and tanks, infrared visors, tail lights etc.



A.MIG-096
CRYSTAL PERISCOPE GREEN
17 ml.

Special acrylic paint used to easily obtain the finish of a glass surface. This water-based paint is odorless and non-toxic. It can be applied directly from the jar but also on the airbrush thinned and easily cleaned with water. It can be applied directly from the jar but also on the airbrush thinned and easily cleaned with water. Its green color is perfect for painting German periscopes or tube position lights when lighted on.



A.MIG-097
CRYSTAL ORANGE
17 ml.

Special acrylic paint used to easily obtain the finish of a glass surface. This water-based paint is odorless and non-toxic. It can be applied directly from the jar but also on the airbrush thinned and easily cleaned with water. It can be applied directly from the jar but also on the airbrush thinned and easily cleaned with water. Its orange color is perfect for painting position lights, optics or signals.





A.MIG-094
CRYSTAL GLASS
17 ml.

Special acrylic paint to obtain the finish of a glass surface easily. It can be applied directly from the bottle and cleaned easily with water. This product is odorless and is not harmful. Its clear color is perfect for a multitude of glass surfaces such as position lights, headlights, focus, etc.



A.MIG-095
CRYSTAL SMOKE
17 ml.

Special acrylic paint to obtain the finish of a glass surface easily. It can be applied directly from the bottle and cleaned easily with water. This paint is odorless and is not harmful. Its smoke color is perfect for a multitude of tinted glass surfaces such as lights of some US vehicles, thick glasses, headlights, etc.



A.MIG-098
CRYSTAL LIGHT BLUE
17 ml.

Special acrylic paint used to easily obtain the finish of a glass surface. This water-based paint is odorless and non-toxic. It can be applied directly from the jar but also on the airbrush thinned and easily cleaned with water. It can be applied directly from the jar but also on the airbrush thinned and easily cleaned with water. Its light blue color is perfect for painting lights and tint crystals, such as some canopies of modern aircrafts.



A.MIG-099
CRYSTAL BLACK BLUE
17 ml.

Special acrylic paint used to easily obtain the finish of a glass surface. This water-based paint is odorless and non-toxic. It can be applied directly from the jar but also on the airbrush thinned and easily cleaned with water. It can be applied directly from the jar but also on the airbrush thinned and easily cleaned with water. Its blue color is perfect for painting, for example, German position lights when turn off.



Weathering Enamels



A.MIG-7400 PIGMENT RUST SET

Set with different pigment rust tones.
3 pigment jars 35ml.

The pigments set you need to give your kits the rusty look you want. It includes three tones; an orange pigment for fresh and recent rust (**A.MIG-3006 LIGHT RUST**), a darker tone for older rust (**A.MIG-3008 TRACK RUST**) and a medium toned rust color (**A.MIG-3005 MEDIUM RUST**).



A.MIG-7401 SUMMER DUST SET

Set with different summer dust tones.
3 jars 35ml.

With this set the modeler will be able to add a dusty appearance to his models not only look like Kursk but also any other dry and dusty area of operation. Includes two enamel effects shades (**A.MIG-1400 KURSK SOIL** and **A.MIG-1401 LIGHT DUST**) and a tone of pigment (**A.MIG-3002 LIGHT DUST**).



Sets

A.MIG-7402 ENGINES OIL & FUEL

Set with different engine effects.
3 enamel jars 35ml.

The essential weathering set for all types of engine effects, including grease and fuel stains. Engines, fuel tanks, mechanical parts and all kinds of dirty engine greased surfaces can be weathered with this set. It includes three enamel effects:

- A.MIG-1407 ENGINE GRIME
- A.MIG-1408 FRESH ENGINE OIL
- A.MIG-1409 FUEL STAINS



A.MIG-7403 RUSTY VEHICLES

Set with different rust tones.
3 enamel jars 35ml.

The perfect set to give a rusty look to your vehicles of any type. But it is also essential for small parts and details in a diorama. Begin with dark tracks or parts with old rust (A.MIG-1002 TRACKS WASH), an orange tone for fresh rust (A.MIG-1004 LIGHT RUST WASH) and finally an enamel to make rust streaks (A.MIG-1204 STREAKING RUST EFFECTS).



A.MIG-7404 FIGHTING COMPARTMENT

3 enamel jars 35ml.

Set for weathering interiors of armored fighting vehicles. With this set you will be able to weather and give a realistic look to the interior parts of your vehicle in a simple way. This set includes a wash and a streaking grime effect for white tones as seen interiors of many combat vehicles. It also includes the pigment for polished metal surfaces typical of the scuffed areas of the interior of any vehicle.



A.MIG-7405 MUD EASTERN FRONT

Set with different mud tones.
3 enamel jars 35ml.

This set allows us to apply the dark and damp mud typical of the Eastern Front in our vehicles. But, these products can be used to represent too dark mud elsewhere in the world.

- A.MIG-1402 FRESH MUD
- A.MIG-1405 DARK MUD
- A.MIG-3007 DARK EARTH



A.MIG-7406 D.A.K. VEHICLES

Set with different tones for North Africa.
3 enamel jars 35ml.

Whether it is DAK, Italian or allied forces this is the perfect set for painting desert-toned vehicles in North Africa. Set includes a wash for sand colors (A.MIG-1001 AFRICA KORPS WASH), a streak effect for desert tones (A.MIG-1201 STREAKING GRIME FOR DAK) and another enamel to get the typical dusty desert effect (A.MIG-1404 NORTH AFRICA DUST).



A.MIG-7408 EUROPE EARTH SET

Set with different Europe earth tones.
3 enamel jars 35ml.

The necessary set for weathering any vehicle that has rolled down a dirt road. These products enable us apply dust and earth effects to any vehicle, especially those located in Europe. Includes two enamel effects products and a pigment; use them alone or in combination.

- A.MIG-1403 EARTH
- A.MIG-1406 DAMP EARTH
- A.MIG-3004 EUROPE EARTH



A.MIG-7409

HUMIDITY & WET EFFECTS

Set with different wet and slime effects. 3 enamel jars 35ml.

Use this set to detail a nice vignette, an abandoned ship and the effects of seaweed in a port or add interesting moss details and wet areas in a diorama. With it you can add two types of mossy dirt, dark or clear, to obtain variety. It also includes a product to make moist effects on any kind of surface and runoff water effects on vehicles (rain effect).

- A.MIG-2015 WET EFFECTS
- A.MIG-1410 SLIMY GRIME DARK
- A.MIG-1411 SLIMY GRIME LIGHT



A.MIG-7410

U.S. MODERN VEHICLES

Set with different US modern weathering effects. 3 enamel jars 35ml.

The necessary set for weathering American vehicles in Iraq or Afghanistan. The modeler may apply a wash and make streak effects with the perfect enamel color and apply the pigment with the right tone for a nice, balanced weathered vehicle. Recommended for use in combination with acrylic-based A.MIG FS 33446 U.S. 025 MODERN VEHICLES color. Includes:

- A.MIG-1007 US MODERN VEHICLES WASH
- A.MIG-1207 STREAKING GRIME FOR US MODERN VEHICLES
- A.MIG-3003 NORTH AFRICA DUST



A.MIG-7407

PANZER GREY

Starter set for Panzer Grey WWII vehicle.

The basic, but indispensable color set to paint German vehicles in the Panzer Grey color used during the early stages of Second World War. The modeler may use the gray base color with acrylic paint Panzer **A.MIG-008** RAL 7021 DUNKELGRAU, make a perfect wash with color **A.MIG-1006** BLUE WASH FOR PANZER GREY and make streaking grime effects with **A.MIG-1202** STREAKING GRIME FOR PANZER GREY. One set for all the essential products for a vehicle of this color.



A.MIG-7411

WINTER CAMO

Starter set for winter camo vehicles.

The necessary and perfect starter set or weathering a winter vehicle. Includes **A.MIG-2010** SCRATCHES EFFECTS that enables easy chipping of acrylic paint **A.MIG-047** WHITE, obtaining a realistic outcome of chips and winter wear in a very simple way. Then we can use the enamel **A.MIG-1205** STREAKING GRIME FOR WINTER VEHICLES to obtain the dirt effects on our winter vehicle. One set with all of the essential products for a vehicle in winter camouflage.



A.MIG-7412

GERMAN TANKS

Starter set for German WWII vehicles.

A basic, but indispensable color set for painting German vehicles in the popular Dark Yellow color as used during World War II. The modeler can apply the base color with acrylic paint Dunkelgelb **A.MIG-011**, make a wash of color with **A.MIG-1000** BROWN WASH FOR GERMAN DARK YELLOW and make streaking grime effects with **A.MIG-1203** STREAKING GRIME. With just one set the modeler can get everything necessary to obtain a nice and balanced vehicle in this color.



A.MIG-7413

U.S. GREEN TANKS

Starter set for US Green vehicles.

The basic, but indispensable color set for painting American vehicles in the popular Olive Green used during World War II and after by the U.S. Army. The modeler can apply the base color with acrylic paint **A.MIG-926** OLIVE DRAB BASE, make a perfect wash with color **A.MIG-1005** WASH DARK BROWN FOR GREEN VEHICLES and finally do streaking grime effects with **A.MIG-1206** DARK STREAKING GRIME. With just one set the modeler can get everything necessary to obtain a nice and balanced vehicle in this color.



Washes

The basic technique used to weather any type of model is the wash, a classic technique that is still one of the most used techniques in modelling today. Our washes offer the most extensive and specific range for all types of vehicles from different countries.



A.MIG-1001 AFRICA KORPS WASH

Wash for light tone vehicles.
35 ml.

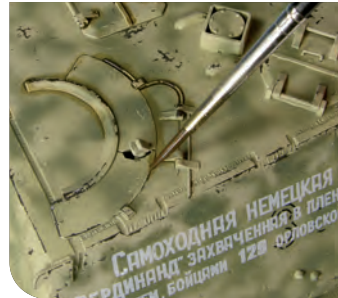
D.A.K. wash for Africa Korps vehicles, also other light colored desert vehicles. Apply on details and remove excess with a clean brush moist with Enamel Thinner.



A.MIG-1000 BROWN WASH FOR GERMAN DARK YELLOW

Also for sand color vehicles.
35 ml.

Ideal wash color for Dunkelgelb vehicles as well as all dark yellow vehicles. Apply on details and remove excess with a clean brush moist in Enamel Thinner.



A.MIG-1002 TRACKS WASH

Enamel type wash for rusty tracks.
35 ml.

Wash for tracks. The perfect tone for rusty or dark tracks and other dark rust effects. Apply on details and remove excess with a clean brush moist with Enamel Thinner.



A.MIG-1003 INTERIORS WASH

Color for white or cream colors.
35 ml.

Ideal wash for creating the accumulation of dirt and grime on details on light colors such as interiors. Apply on details and remove excess with a clean brush moist with Enamel Thinner.



A.MIG-1004 LIGHT RUST WASH

Enamel type wash for dark green vehicles.
35 ml.

Light rust wash, ideal for rust effects on all kind of surfaces. Perfect for any rust effects on all surfaces. Apply on details and remove excess with a clean brush moist in Enamel Thinner.





A.MIG-1005
DARK BROWN WASH FOR GREEN VEHICLES
 For Shermans, T34, etc...
 35 ml.

Wash dark brown perfect for dark colored vehicles. Apply on details and remove excess with a clean brush moist with Enamel Thinner.



A.MIG-1006
BLUE WASH FOR PANZER GREY
 Early german tanks or starships.
 35 ml.

Wash for grey vehicles. Ideal for Panzer Grey. Apply on details and remove excess with a clean brush moist in Enamel Thinner.



A.MIG-1007
US MODERN VEHICLES WASH
 Great tone for US modern vehicles.
 35 ml.

Dirt color wash specifically suited for use over Modern US sand colored vehicles. Apply on details and remove excess with a clean brush moist in Enamel Thinner.



A.MIG-1008
NATO CAMOUFLAGES WASH
 Enamel type wash for modelling.
 35 ml.

Enamel wash ideally matched for use over NATO and other dark camouflage schemes. Apply on details and remove excess with a clean brush moist with Enamel Thinner.



Streaking effects

The products to create the effects of streaking dirt are the basic pillar of the whole range of products from AMMO of Mig Jimenez. These effects can be seen on vehicles from almost any time period and give a very realistic aspect even when we don't add any other effects afterwards. You can find different effects of streaking adapted to a great variety of themes. You just need to choose your color for each type of vehicle that you are painting.

A.MIG-1200 STREAKING GRIME FOR INTERIORS

Streaking effect for light tones.
35 ml.

Ideal color for creating dirt streaks on light colored surfaces such as AFV interiors. Also suitable for other effects such as add chromatic richness to any piece or surface. Apply lines from the upper part of plate and then fade with a clean brush moist with Enamel Thinner.



A.MIG-1201 AFRICA KORPS WASH

For North Africa vehicles.
35 ml.

Grimy grey colored effect ideally suited for creating streaks of dirt over sand and light colored surfaces. Also suitable for other effects such as add chromatic richness to any piece or surface. Apply lines from the upper part of plate and then fade with a clean brush moist with Enamel Thinner.



A.MIG-1202 STREAKING GRIME FOR PANZER GREY

For early german tanks.
35 ml.

Dark colored streaking effect specifically designed to be used over dark grey surfaces. Also suitable for other effects such as add chromatic richness to any piece or surface. Apply lines from the upper part of plate and then fade with a clean brush moist with Enamel Thinner.



A.MIG-1203 STREAKING GRIME

For dark yellow vehicles.
35 ml.

Create realistic dirt streaks and grime effects easily with this dirty grey color. Apply lines from the upper part of plate and then fade with a clean brush moist with Enamel Thinner.



A.MIG-1204 STREAKING RUST EFFECTS

Rusty streaks effects.
35 ml.

Rust and corrosion streaks and stains are easily produced using this reddish-brown color. Also suitable for other effects such as add chromatic richness to any piece or surface. Apply lines from the upper part of plate and then fade with a clean brush moist with Enamel Thinner.





A.MIG-1205 STREAKING GRIME FOR WINTER VEHICLES

Grey brown for winter vehicles.
35 ml.

Light grey color ideal for creating dirt streaks on light or white colored surfaces. Also suitable for other effects such as add chromatic richness to any piece or surface. Apply lines from the upper part of plate and then fade with a clean brush moist with Enamel Thinner.



A.MIG-1206 DARK STREAKING GRIME

For dark green vehicles.
35 ml.

Darkest color in our range specifically suited for streaking effects over dark colored vehicles and surfaces. Also suitable for other effects such as add chromatic richness to any piece or surface. Apply lines from the upper part of plate and then fade with a clean brush moist with Enamel Thinner.



A.MIG-1207 STREAKING GRIME FOR US MODERN VEHICLES

Enamel to create Streaking effect.
35 ml.

Ideal color for creating dirt streaks on sand and light brown colored vehicles. Also suitable for other effects such as add chromatic richness to any piece or surface. Apply lines from the upper part of plate and then fade with a clean brush moist with Enamel Thinner.



A.MIG-1208 RAINMARKS EFFECTS

Also to create dust effects.
35 ml.

Create realistic streaks and rainmarks with this light colored enamel effect. Apply lines from the upper part of plate and then fade with a clean brush moist with Enamel Thinner.



Nature effects

The colours to create dust, earth, and mud must be exact and very realistic to make your models look credible. Our range of products designed for these effects are exact reproductions of the distinct surroundings found around the world. Avoid errors with homemade mixes and use these colours directly on your models to achieve the best results. Some of these products are satin to represent wet earth or fresh mud.



A.MIG-1400 KURSK SOIL

For Russia dioramas in summer.
35 ml.

Medium yellow-brown colored effect ideally suited for creating dust and dirt appearance. Apply with a brush or airbrush and then fade with a clean brush moist with Enamel Thinner.



A.MIG-1401 LIGHT DUST

To create contrast in vehicles.
35 ml.

Light colored enamel that can be used to create dusty effects on surfaces. Apply with a brush or airbrush and then fade with a clean brush moist in Enamel Thinner.



A.MIG-1402 FRESH MUD

Realistic satin dark mud.
35 ml.

Dark brown enamel effect ideally suited for creating muddy surfaces. It can be also mix with plaster to create volume. Apply with a brush or airbrush and then fade with a clean brush moist with Enamel Thinner.



A.MIG-1403 EARTH

Useful for all kind of subjects.
35 ml.

Create dirt and mud effects with this realistic earth colored enamel. It can be also mix with plaster to create volume. Apply with a brush or airbrush and then fade with a clean brush moist with Enamel Thinner.



A.MIG-1404 NORTH AFRICA DUST

Perfect for desertic enviroiments.
35 ml.

Light tan colored effect ideally suited to creating dusty accumulations on surfaces. Apply with a brush or airbrush and then fade with a clean brush moist with Enamel Thinner.



A.MIG-1405 DARK MUD

Enamel to create nature effect.
35 ml.

This dark earth colored effect can be used alone or mixed with other earth tones. Mix with plaster to create accumulations of textured mud and earth. Apply and fade with a clean brush moist with Enamel Thinner.





A.MIG-1406
DAMP EARTH

Satin earth tone for dioramas.
35 ml.

Earth colored effect that dries with a satin finish for the appearance of wet or damp mud. Mix with plaster to create accumulations of textured mud and earth. Apply and blend with a clean brush moist with Enamel Thinner.



A.MIG-1407
ENGINE GRIME

Matt grey tone.
35 ml.

This dark grey colored effect is perfect for creating the grimy appearance and accumulated dirt of well used engines. Apply and blend with a clean brush moist with Enamel Thinner.



A.MIG-1408
FRESH ENGINE OIL

Authentic fresh oil effect for engines.
35 ml.

Create fresh oil leaks and stains with this enamel effect for the most realistic vehicles. Apply with a brush in different lays of different intensities for the most realistic effects.



A.MIG-1409
FUEL STAINS

Semy gloss and very realistic.
35 ml.

Light amber colored effect that dries with a satin finish. Can be used alone or in combination with other effects to create a range of spilled fuel effects. Apply with a brush in different lays of different intensities for the most realistic effect.



A.MIG-1410
SLIMY GRIME DARK

Harbours, sea dioramas, ships, green stuff.
35 ml.

This light green colored effect is perfect for creating fresh moss and slimy surfaces caused by dampness. Apply and fade with a clean brush moist with Enamel Thinner.



A.MIG-1411
SLIMY GRIME LIGHT

Harbours, sea dioramas, ships.
35 ml.

This dark green colored effect is perfect for creating moss and slimy surfaces caused by dampness. Apply and fade with a clean brush moist with Enamel Thinner.



Pigments

With the knowledge gained by Mig Jimenez during the long experience of developing the best pigments available for modelling, he has now developed this new basic range of the most essential colors for doing any type of effect. Avoid getting lost in a more extensive range now that the most necessary and useful colors are here.



A.MIG-3000 PIGMENT FIXER

Enamel fixer to glue pigments in an effective way.
35 ml.

Recommended product to adhere pigments to the surfaces of your models and bases. Use capillary effect to allow fluid to flow over pigment powder. Once dried, pigments are permanently adhered to the surface and return to dry color.



A.MIG-3001 BLACK

For smoke, exhaust pipes...
35 ml.

High quality Pigment, superfine and made from natural products for exclusive use in modeling. This color is specially designed to make effects in your models using the techniques that Mig Jimenez created for more than a decade.



A.MIG-3002 LIGHT DUST

Concrete, walls, floors...
35 ml.

High quality Pigment, superfine and made from natural products for exclusive use in modeling. This color is specially designed to make effects in your models using the techniques that Mig Jimenez created for more than a decade.



A.MIG-3003 NORTH AFRICA DUST

Middle east, DAK, South Europe.
35 ml.

High quality Pigment, superfine and made from natural products for exclusive use in modeling. This color is specially designed to make effects in your models using the techniques that Mig Jimenez created for more than a decade.



A.MIG-3004 EUROPE EARTH

Europe dust, cities, dioramas.
35 ml.

High quality Pigment, superfine and made from natural products for exclusive use in modeling. This color is specially designed to make effects in your models using the techniques that Mig Jimenez created for more than a decade.



A.MIG-3005 MEDIUM RUST

Rusty vehicles, exhaust pipes.
35 ml.

High quality Pigment, superfine and made from natural products for exclusive use in modeling. This color is specially designed to make effects in your models using the techniques that Mig Jimenez created for more than a decade.



A.MIG-3006 LIGHT RUST

Rusty vehicles, exhaust pipes.
35 ml.

High quality Pigment, superfine and made from natural products for exclusive use in modeling. This color is specially designed to make effects in your models using the techniques that Mig Jimenez created for more than a decade.



A.MIG-3007 DARK EARTH

Europe earth, Russia, dioramas.
35 ml.

High quality Pigment, superfine and made from natural products for exclusive use in modeling. This color is specially designed to make effects in your models using the techniques that Mig Jimenez created for more than a decade.



A.MIG-3008 TRACK RUST

Shadows, grounds, tracks, rust.
35 ml.

High quality Pigment, superfine and made from natural products for exclusive use in modeling. This color is specially designed to make effects in your models using the techniques that Mig Jimenez created for more than a decade.



A.MIG-3009 GUN METAL

Guns, tracks, metal parts.
35 ml.

High quality Pigment, superfine and made from natural products for exclusive use in modeling. This color is specially designed to make effects in your models using the techniques that Mig Jimenez created for more than a decade. This gun metal color is very special because you have to apply it on a surface and then rub it with your finger or a soft tool to get the brightness of polished metal.



A.MIG-3010 CONCRETE

Superfine pigment for modelling.
35 ml.

A light grey color used to create the dusty appearance of broken concrete. High quality Pigment, superfine and made from natural products for exclusive use in modeling. This color is specially designed to make effects in your models using the techniques that Mig Jimenez created for more than a decade. Use it alone or in combination with other AMMO products.



A.MIG-3011 AIRFIELD DUST

Superfine pigment for modelling.
35 ml.

Pigment color used to create the blown dust effects on airfields and tarmacs caused by aircraft landings and take off. High quality Pigment, superfine and made from natural products for exclusive use in modeling. This color is specially designed to make effects in your models using the techniques that Mig Jimenez created for more than a decade. Use it alone or in combination with other AMMO products.



A.MIG-3012 SAND

Superfine pigment for modelling.
35 ml.

Light colored pigment used for creating a dusty desert or beach appearance on vehicles and in vignettes. High quality Pigment, superfine and made from natural products for exclusive use in modeling. This color is specially designed to make effects in your models using the techniques that Mig Jimenez created for more than a decade. Use it alone or in combination with other AMMO products.



A.MIG-3013 RUBBLE

Superfine pigment for modelling.
35 ml.

A grey color used for achieving a dusty appearance in an urban environment. High quality Pigment, superfine and made from natural products for exclusive use in modeling. This color is specially designed to make effects in your models using the techniques that Mig Jimenez created for more than a decade. Use it alone or in combination with other AMMO products.



A.MIG-3014 RUSSIAN EARTH

Superfine pigment for modelling.
35 ml.

Dark earth color ideally suited for producing mud and dust. High quality Pigment, superfine and made from natural products for exclusive use in modeling. This color is specially designed to make effects in your models using the techniques that Mig Jimenez created for more than a decade. Use it alone or in combination with other AMMO products.



A.MIG-3015 BRICK DUST

Superfine pigment for modelling.
35 ml.

Terra Cotta colored pigment perfect for scenes with broken bricks or on vehicles in urban environments. High quality Pigment, superfine and made from natural products for exclusive use in modeling. This color is specially designed to make effects in your models using the techniques that Mig Jimenez created for more than a decade. Use it alone or in combination with other AMMO products.



A.MIG-3016 WHITE

Superfine pigment for modelling.
35 ml.

A pigment color can be used alone to create ash or snow effects, or in combination to lighten other pigment colors. High quality Pigment, superfine and made from natural products for exclusive use in modeling. This color is specially designed to make effects in your models using the techniques that Mig Jimenez created for more than a decade. Use it alone or in combination with other AMMO products.



A.MIG-3017 PRIMER RED

Superfine pigment for modelling.
35 ml.

A colored pigment used to richness and color variation on primer red surfaces. High quality Pigment, superfine and made from natural products for exclusive use in modeling. This color is specially designed to make effects in your models using the techniques that Mig Jimenez created for more than a decade. Use it alone or in combination with other AMMO products.



A.MIG-3018 MIDDLE EAST DUST

Superfine pigment for modelling.
35 ml.

Pigment color used to represent the dust and dirt often observed on vehicles in this important region. High quality Pigment, superfine and made from natural products for exclusive use in modeling. This color is specially designed to make effects in your models using the techniques that Mig Jimenez created for more than a decade. Use it alone or in combination with other AMMO products.



A.MIG-3019 ARMY GREEN

Superfine pigment for modelling.
35 ml.

A colored pigment used to add richness and color variation to green surfaces. High quality Pigment, superfine and made from natural products for exclusive use in modeling. This color is specially designed to make effects in your models using the techniques that Mig Jimenez created for more than a decade. Use it alone or in combination with other AMMO products.



Filters



In 2002 Mig Jimenez created for first time the FILTERS, based in his technique developed in 1998. These products become very popular around the world and now after many years we decided to release them again with a new look and re-formulated. The most genuine Mig's product now under AMMO label.

Filter easy and ready to use directly on your model. This filter is specially designed for use on bright or white winter surfaces such as tanks, spaceships, light colored aircraft, or vehicles of the United Nations. Use the filters by moistening a brush and applying it without flooding the surface, to enrich hues in your models, unify camouflage, or highlight areas with a different tone. With these products we will avoid mixing paints, looking for the correct dilution, or searching for the correct colors for our vehicle. These filters are enamel based and can be cleaned or diluted with Odorless Enamel Thinner. Three 30 ml jars.

					
A.MIG-1500 BROWN FOR WHITE 30 ml.	A.MIG-1501 GREY FOR WHITE 30 ml.	A.MIG-1502 DARK GREY FOR WHITE 30 ml.	A.MIG-1503 OCHRE FOR LIGHT SAND 30 ml.	A.MIG-1504 BROWN FOR DESERT YELLOW 30 ml.	A.MIG-1505 GREY FOR YELLOW SAND 30 ml.
					
A.MIG-1506 BROWN FOR DARK GREEN 30 ml.	A.MIG-1507 TAN FOR YELLOW GREEN 30 ml.	A.MIG-1508 GREEN FOR GREY GREEN 30 ml.	A.MIG-1509 BLUE FOR DARK GREY 30 ml.	A.MIG-1510 TAN FOR 3 TONE CAMO 30 ml.	A.MIG-1511 BROWN FOR DARK YELLOW 30 ml.

A.MIG-7450
FILTER SET FOR WINTER AND UN VEHICLES
Set of 3 high quality filters ready to use.
30 mL each

A.MIG-1500 Brown For White
A.MIG-1501 Grey For White
A.MIG-1502 Dark Grey For White



A.MIG-7451
FILTER SET FOR DESERT VEHICLES
Set of 3 high quality filters ready to use.
30 mL each

A.MIG-1503 Ochre For Light Sand
A.MIG-1504 Brown For Desert Yellow
A.MIG-1505 Grey For Yellow Sand



A.MIG-7452
FILTER SET FOR GREEN VEHICLES
Set of 3 high quality filters ready to use.
30 mL each

A.MIG-1506 Brown For Dark Green
A.MIG-1507 Tan For Yellow Green
A.MIG-1508 Ochre For Grey Green

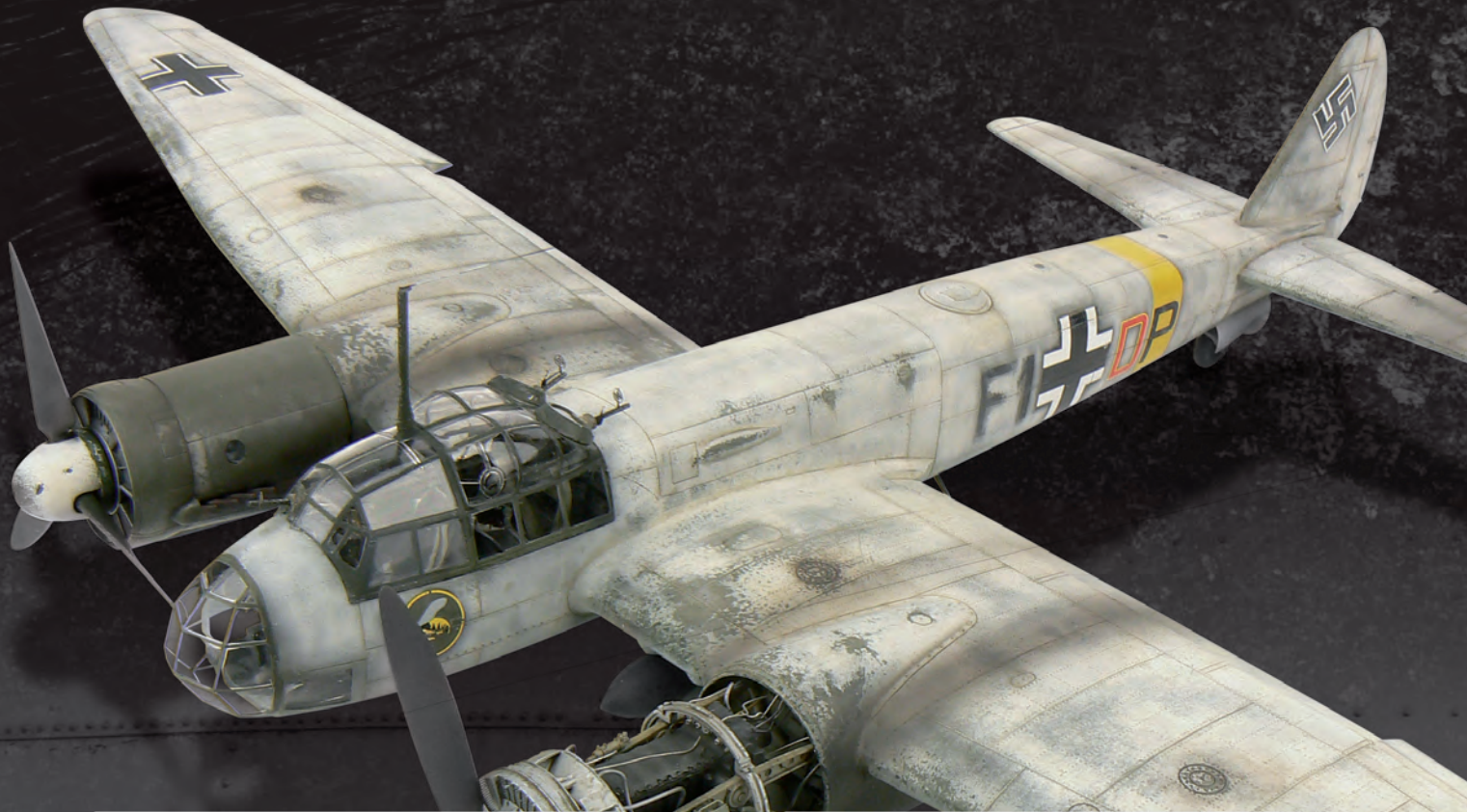


A.MIG-7453
FILTER SET FOR GERMAN TANKS
Set of 3 high quality filters ready to use.
30 mL each

A.MIG-1509 Blue For Dark Grey
A.MIG-1510 Tan For 3 Tone Camo
A.MIG-1511 Brown For Dark Yellow



Aircraft Weathering Enamels



A.MIG-7414 GERMAN EARLY FIGHTERS AND BOMBERS

Washes for german fighters and bombers of WW2
Set with 3 Panel Line Wash jars. 3 x 35mL.

Set for washes and defining panel lines of initial German fighters up to 1940 and bombers throughout World War II.

Includes 3 colors from the Panel Line Wash line, allowing us to easily outline these aircraft:

A.MIG-1608
PLW Dark Green Grey, for RLM 70 and 71 colors.

A.MIG-1610
PLW Tan Grey, for RLM 65.

A.MIG-1616
PLW Orange Brown, perfect for all yellow details in RLM 04, common of this era.



A.MIG-7415 GERMAN LATE FIGHTERS

Washes for german late fighters in WW2
Set with 3 Panel Line Wash jars. 3 x 35mL.

Set for washes and defining panel lines of late World War II German fighters.

Includes 3 colors from Panel Line Wash line, allowing us to easily outline these aircraft:

A.MIG-1611
PLW Black Night, for green colors RLM 81 and RLM 82.

A.MIG-1612
PLW Green Brown, for RLM 83.

A.MIG-1613
PLW Blue Grey, perfect for colors RLM 76 and RLM78.



A.MIG-7416 RAF FIGHTERS AND BOMBERS

Washes for RAF fighters and bombers of WW2
Set with 3 Panel Line Wash jars. 3 x 35mL.

Set for washes and defining panel lines of RAF fighters and bombers during World War II.

Includes 3 colors from Panel Line Wash line, allowing us to easily outline these aircraft:

A.MIG-1609

PLW Storm Grey, perfect for grey bluish use in lower areas.

A.MIG-1614

PLW Neutral Brown, to panel Brown and Green colors of upper areas.

A.MIG-1615

PLW Stone Grey for Black, for green color.



A.MIG-7417 WWII PACIFIC US NAVY AIRPLANES

Washes for German fighters and bombers of WW2
Set with 2 Panel Line Wash jars and a streaking effect enamel. 3 x 35mL.

Weathering set for U.S. Navy aircraft in the Pacific during World War II.

Includes 2 colors from Panel Line Wash line, allowing us to easily outline the colors of these aircraft:

A.MIG-1603

PLW DARK SEA BLUE, for the dark blue of upper surfaces.

A.MIG-1604

PLW PACIFIC DUST, for light blue of lower surfaces and the typical dust produced on airfields in Pacific Islands.

This set also includes the streaking effect

A.MIG-1203

STREAKING GRIME which allows us realize typical dirt effects of aircraft of the US Navy in the Pacific Theater.



A.MIG-7418 WWII JAPANESE AIRPLANES

Washes for Japanese fighters and bombers of WW2
Set with 3 Panel Line Wash jars. 3 x 35mL.

Set for washes and defining panel lines of Japanese aircrafts during World War II.

Includes 3 colors from Panel Line Wash line, allowing us to easily outline these aircraft:

A.MIG-1605

PLW Dark red Brown, perfect for the typical red color of Hinomaru.

A.MIG-1606

PLW Medium Tan, for green colors used on Japanese aircrafts.

A.MIG-1607

PLW Sky Grey, for yellow/ grey color.



A.MIG-7419 US NAVY GREY JETS

Washes for modern grey jets
Set with 3 Panel Line Wash jars. 3 x 35mL.

Set for washes and defining panel lines of modern jets such as those from US Navy.

Includes 3 colors from Panel Line Wash line, allowing us to easily outline these aircraft:

A.MIG-1600

PLW Light Grey, for light grey tones.

A.MIG-1601

PLW Medium Grey, for medium grey colors.

A.MIG-1602

PLW Deep Grey, for dark grey colors.



A.MIG-7420 AIRPLANES ENGINES AND EXHAUSTS

Pigments and nature effect enamel for weathering
Set with 2 pigment jars and enamel one. 3 x 35mL.

Weathering aircrafts set. With this set you can add life easily to an engine and exhaust of your airplane, creating the effects of spilled fuel, little touches of rust, and general maintenance spills.

The set includes an enamel product to paint spilled fuel

(A.MIG-1408 FRESH ENGINE OIL) and two pigments perfect to rust and blacken exhaust and other areas of the aircraft

(A.MIG-3001 BLACK and A.MIG-3008 TRACK RUST).



A.MIG-7421 AIRPLANES DUST EFFECTS

Pigments and nature effect enamel for weathering
Set with 2 pigment jars and enamel one. 3 x 35mL.

Weathering aircraft set. With this set you can easily add dust and dirt effects to your plane in a realistic way.

Set includes two dusty pigments tones perfect for the dust and dirt on exterior of the aircraft, the undercarriage, and cabin interiors.

(A.MIG-3002 LIGHT DUST and DUST AIRFIELD A.MIG-3011)

and an enamel product effect which will perfectly complement the pigments **(A.MIG-1403 EARTH).**



A.MIG-7422 IIWW SOVIET FIGHTERS (Green & Black camouflages)

Washes for green and black soviet fighters of WW2
Set with 3 Panel Line Wash jars. 3 x 35mL.

Set for washes and defining panel lines of Russian fighters during World War II .

Includes 3 colors from Panel Line Wash line, allowing us to easily outline these aircraft:

A.MIG-1612
PLW Green Brown, for green camouflage.

A.MIG-1615
PLW Stone Grey for Black, for black camouflage.

A.MIG-1619
PLW Blue Dirt, for grey blue plane's undersides.



A.MIG-7423 METALLIC AIRPLANES & JETS

Washes for metallic airplanes and jets
Set with 3 Panel Line Wash jars. 3 x 35mL.

Set for washes and defining panel lines of any airplanes and jets in natural metal.

Includes 3 colors from Panel Line Wash line, allowing us to easily outline these aircraft with different intensities for each area. Also useful for jet engines parts and hydraulic systems:

A.MIG-1602
PLW Deep Grey

A.MIG-1617
PLW Blue Black

A.MIG-1618
PLW Deep Brown





Model by Jamie Haggo

A.MIG-1600
PLW LIGHT GREY

For light grey tones
35 ml.

Light gray panel wash: perfect for aircraft painted in white or very light gray colors, such as Vietnam era aircraft or those in winter camouflage. It is also useful for ships, Science Fiction subjects, and any vehicle in light gray or winter color. Our Panel Line Wash range is specially designed to create soft washed panel lines in aircraft, and is also perfect for other vehicles where we want to obtain subtle effects such as science fiction subjects, ships and trains.



A.MIG-1601
PLW MEDIUM GREY

For medium grey
35 ml.

Medium gray panel wash, perfect for aircraft painted in medium or light gray, such as some modern U.S. Naval aircraft. It is also useful for ships, Science Fiction subjects, and any vehicle a light gray paint scheme. Our Panel Line Wash range is specially designed to create soft washed panel lines in aircraft, and is also perfect for other vehicles where we want to obtain subtle effects such as science fiction subjects, ships and trains.



A.MIG-1602
PLW DEEP GREY

For dark grey colors
35 ml.

Dark gray panel wash, perfect for aircraft painted in medium or dark gray. It is also useful for ships, Science Fiction spacecraft and any vehicle depicted in medium or dark gray. Our Panel Line Wash range is specially designed to create soft washed panel lines in aircraft, and is also perfect for other vehicles where we want to obtain subtle effects such as science fiction subjects, ships and trains.



A.MIG-1603
PLW DARK SEA BLUE

For the dark blue of upper surfaces
35 ml.

Panel wash for US aircrafts of World War II in the Pacific Theater of Operations, painted in dark blue such as Corsairs, Hellcats, and many other Marine Corp. & Naval aircraft. It is also very useful for any science fiction subject, ships, or vehicles painted in blue. Our Panel Line Wash range is specially designed to create soft washed panel lines in aircraft, and is also perfect for other vehicles where we want to obtain subtle effects such as science fiction subjects, ships and trains.



A.MIG-1604
PLW PACIFIC DUST

For the typical dust produced on airfields in Pacific Islands
35 ml.

Panel wash for Pacific theatre dusty tones. Perfect for dust effects created on Pacific airfields during World War II. Designed for aircraft painted in shades of blue or green. Our Panel Line Wash range is specially designed to create soft washed panel lines in aircraft, and is also perfect for other vehicles where we want to obtain subtle effects such as science fiction subjects, ships and trains.



A.MIG-1605
PLW DARK RED BROWN

For the typical red color of Hinomaru
35 ml.

Specific panel wash to darken red colors in all types of vehicles, machinery, and roundels (Hinomaru) of Japanese planes during World War II. Our Panel Line Wash range is specially designed to create soft washed panel lines in aircraft, and is also perfect for other vehicles where we want to obtain subtle effects such as science fiction subjects, ships and trains.



A.MIG-1606 PLW MEDIUM TAN

For green colors used on Japanese aircrafts
35 ml.

Wash for dust-colored panels, perfect for vehicles and aircraft in very dark green color, like the Japanese aircraft of World War II. Our Panel Line Wash range is specially designed to create soft washed panel lines in aircraft, and is also perfect for other vehicles where we want to obtain subtle effects such as science fiction subjects, ships and trains.



A.MIG-1607 PLW SKY GREY

For yellow/grey color
35 ml.

Wash for aircrafts and vehicles with panels painted in light colors such as light gray Japanese aircraft of World War II aircraft. Our Panel Line Wash range is specially designed to create soft washed panel lines in aircraft, and is also perfect for other vehicles where we want to obtain subtle effects such as science fiction subjects, ships and trains.



A.MIG-1608 PLW DARK GREEN GREY

For RLM 70 and RLM 71 colors
35 ml.

Specific panel wash for RLM 70 and 71 colors, typical for German aircrafts during the Second World War. Our Panel Line Wash range is specially designed to create soft washed panel lines in aircraft, and is also perfect for other vehicles where we want to obtain subtle effects such as science fiction subjects, ships and trains.



A.MIG-1609 PLW STORM GREY

For grey bluish in lower areas
35 ml.

Specific panel wash for pale bluish grey colors, such as those in the bellies of the fighters of the RAF during the Second World War. Our Panel Line Wash range is specially designed to create soft washed panel lines in aircraft, and is also perfect for other vehicles where we want to obtain subtle effects such as science fiction subjects, ships and trains.



A.MIG-1610 PLW TAN GREY

For RLM 65 color
35 ml.

Specific panel wash for RLM 65 color, typical of German aircraft during Second World War on bellies of fighters and bombers. Our Panel Line Wash range is specially designed to create soft washed panel lines in aircraft, and is also perfect for other vehicles where we want to obtain subtle effects such as science fiction subjects, ships and trains.



A.MIG-1611 PLW BLACK NIGHT

For green colors RLM 81 and RLM 82
35 ml.

Very dark wash specific for panels on RLM 81 and RLM 82 colors typical for German Luftwaffe aircraft during late Second World War. It is also perfect for any other tone or subject that requires a very dark panel wash. Our Panel Line Wash range is specially designed to create soft washed panel lines in aircraft, and is also perfect for other vehicles where we want to obtain subtle effects such as science fiction subjects, ships and trains.



A.MIG-1612 PLW GREEN BROWN

For RLM 83 color
35 ml.

Specific panel wash for green colors such as RLM 83 typical for German Luftwaffe aircraft of the Second World War. Our Panel Line Wash range is specially designed to create soft washed panel lines in aircraft, and is also perfect for other vehicles where we want to obtain subtle effects such as science fiction subjects, ships and trains.



A.MIG-1613 PLW BLUE GREY

For RLM 76 and RLM 78
35 ml.

Panel wash for light blue and gray colors like RLM 76 and RLM 78 of German Luftwaffe aircraft of late Second World War. Our Panel Line Wash range is specially designed to create soft washed panel lines in aircraft, and is also perfect for other vehicles where we want to obtain subtle effects such as science fiction subjects, ships and trains.



A.MIG-1614 PLW NEUTRAL BROWN

To panel Brown and Green colors of upper areas
35 ml.

Panel wash perfect for green and brown camouflage colors used in fighters and bombers of the R.A.F. in World War II. Our Panel Line Wash range is specially designed to create soft washed panel lines in aircraft, and is also perfect for other vehicles where we want to obtain subtle effects such as science fiction subjects, ships and trains.



A.MIG-1615 PLW STONE GREY FOR BLACK

For green colors
35 ml.

Specially designed color for panel washes on black colored surfaces. Perfect for modern submarines, locomotives, or R.A.F. night fighters & bombers of World War II. Our Panel Line Wash range is specially designed to create soft washed panel lines in aircraft, and is also perfect for other vehicles where we want to obtain subtle effects such as science fiction subjects, ships and trains.



A.MIG-1616 PLW ORANGE BROWN

For yellow details in RLM 04
35 ml.

Specific panel wash to darken yellow colors on all kinds of surfaces, such as robots, locomotives, machinery, or RLM 04 colored German Luftwaffe aircraft of World War II. Our Panel Line Wash range is specially designed to create soft washed panel lines in aircraft, and is also perfect for other vehicles where we want to obtain subtle effects such as science fiction subjects, ships and trains.



A.MIG-1617 PLW BLUE BLACK

For dark shades of metallic surfaces
35 ml.

Blue Black Panel Wash. Perfect for dark shades of metallic surfaces such as jet engines and lower parts of natural metal aircraft. It is also useful for ships, Science Fiction subjects, and any vehicle on dark greys or dark metals. Our Panel Line Wash range is specially designed to create soft washed panel lines in aircraft. It is also perfect for other vehicles where we want to obtain subtle effects such as science fiction subjects, ships and trains.



A.MIG-1618 PLW DEEP BROWN

For darkest shades of metallic surfaces
35 ml.

Deep Brown Panel Wash. Perfect for darkest shades of metallic surfaces such as jet engines and hydraulic suspensions of modern aircraft. It is also useful for ships, Science Fiction subjects, and any vehicle with engines or hydraulic systems. Our Panel Line Wash range is specially designed to create soft washed panel lines in aircraft. It is also perfect for other vehicles where we want to obtain subtle effects such as science fiction subjects, ships and trains.



A.MIG-1619 PLW BLUE DIRT

For blue surfaces such as lower parts
35 ml.

Blue Dirt Panel Wash. Perfect for blue surfaces such as lower parts of WW II Russian aircraft. It is also useful for ships, Science Fiction subjects, and any vehicle on blue tones. Our Panel Line Wash range is specially designed to create soft washed panel lines in aircraft. It is also perfect for other vehicles where we want to obtain subtle effects such as science fiction subjects, ships and trains.



Model by Jamie Haggio

Auxiliary products





A.MIG-2000
ACRYLIC THINNER

60 ml.

Water based thinner specifically designed for use with Ammo acrylics, but compatible with other acrylic brands as well. Non-toxic and odorless.



A.MIG-2001
CLEANER

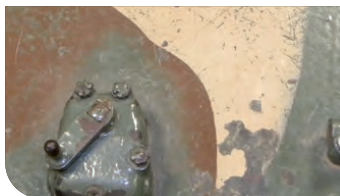
100 ml.

Cleaning solution designed for removing acrylics from brushes and airbrushes. Non-toxic.



A.MIG-2010
SCRATCHES EFFECTS

Odorless fluid to create Scratches Effects.
35 ml.



A.MIG-2011
HEAVY CHIPPING EFFECTS

Odorless fluid to create Heavy Chipping Effects.
35 ml.



A.MIG-2012
SAND & GRAVEL GLUE

Glue for different materials such gravel, sand, stones.
100 ml.



A.MIG-2015
WET EFFECTS

Special semi-glossy liquid to create wet effects and water.
35 ml.



A.MIG-2018
ENAMEL OUDERLESS THINNER

Perfect enamel thinner for weathering effects.
35 ml.

Our odorless thinner is specifically designed for use with Ammo Washes and Effects allowing you the greatest flexibility to create any density of effect. Jar of 35 ml.



A.MIG-2019
ENAMEL OUDERLESS THINNER

Perfect enamel thinner for weathering effects.
100 ml.

Our odorless thinner is specifically designed for use with Ammo Washes and Effects allowing you the greatest flexibility to create any density of effect. Jar of 100 ml.



Burnishing products



A.MIG-2020 BURNISHING FLUID

Burnishing agent for metallic-tracks
100 ml.

Burnishing agent for white metal tracks of any brand. In just few minutes you can blacken metallic tracks in a realistic dark rust color. The result is also matt, durable, and permanent so it is the perfect base for later treatments with pigments or paints.



A.MIG-2021 PHOTOETCH BURNISHING FLUID

Burnishing agent for photoetch
100 ml.

Burnishing agent for photo etch parts and brass barrels. Instant blackening for turned brass barrels and photo etch within about 3-5 minutes. Photo etch Burnishing Fluid also blackens tin solder used for soldering Photo-etch for a uniform effect.



Publications

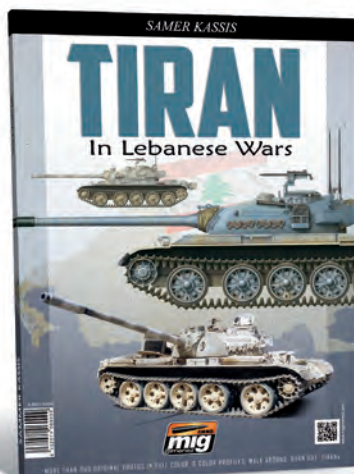
A.MIG-6000

TIRAN In Lebanese Wars

Samer Kassiss

More than 300 original photos in full color, 6 color profiles, walk around, burn out TIRANs.
96 pages

In its 96 pages, this book will show the modeler over 300 unpublished and high quality photos of the Tiran. It includes photos of this tank in combat, destroyed, variants, on maneuvers, a walk-around of all the details, and more. The modeler will also enjoy the innumerable effects, damage, deterioration, grease, chipping, etc, this vehicle presented during its operational life and use them as inspiration for their models not only of Tiran but any other tank. In addition the book provides countless ideas for diorama modelers. Undoubtedly the best work of Samer Kassiss.



A.MIG-6001

SS Waffen Colors

Camouflage Profile Guide

By Mig Jimenez, Jan Kubitzki & Carlos Cuesta.
80 pages

Through 80 pages and more than 180 profiles, this book examines the history of colors and camouflage used by the Waffen SS on their vehicles. From a BMW sidecar 75 prior to the invasion of Poland to the King Tiger 501 s.SS.Pz.Abt used by LAH Peiper in the Ardennes, this book covers a wide variety of vehicles, colors, and camouflage used by this dark branch of the Wehrmacht. It also provides useful information about the units, fronts, and different equipment levels of this unit. With this much information, modelers will find both inspiration and useful information to deal with their next model.



A.MIG-6007

EASTERN FRONT. Russian Vehicles 1935-1945. Camouflage Guide

Camouflage Profile Guide

80 pages



In this book you will find all the inspiration you need to make original Soviet vehicles with a wide and never seen variety of colors, effects, and camouflage. Through 80 pages this book discovers that the Soviets vehicles of the Second World War were not only painted green. Here you have more than 180 profiles which are strictly based on historical photos, many of them never seen before, in which the colors have been studied in depth. The book includes in depth information for each of the vehicles shown as well as a technical introduction to the Soviet paint, its chemistry, and its application, obtained from sources from former USSR countries. This is the definitive guide to the colors in the Soviet period from 1935 to 1945.



A.MIG-6003
Painting Wargame Tanks

Step by step guide to paint Wargame vehicles.
 By Rubén Torregrosa and Mig Jimenez.
 96 pages

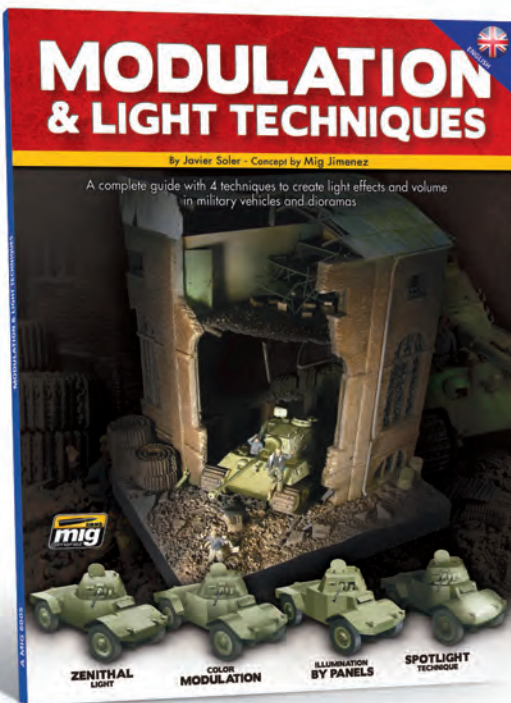


The definitive guide to paint Wargames armored vehicles by the hands of the famous Ruben Torregrosa (Heresybrush) and Mig Jimenez. Through its 96 pages we will discover, in a very visual and easy manner, how to get the results we want in our vehicles, since the book adapts to the needs of each player. From a basic guide for materials, through painting a tank in an easy but effective way, to obtaining the best possible professional finish. The ultimate tool to make your tanks the highlight of the tabletop.



A.MIG-6006
Modulation And Light Techniques

Guide with 106 pages to paint models with light effects.
 By Javier Soler - Concept by Mig Jimenez.

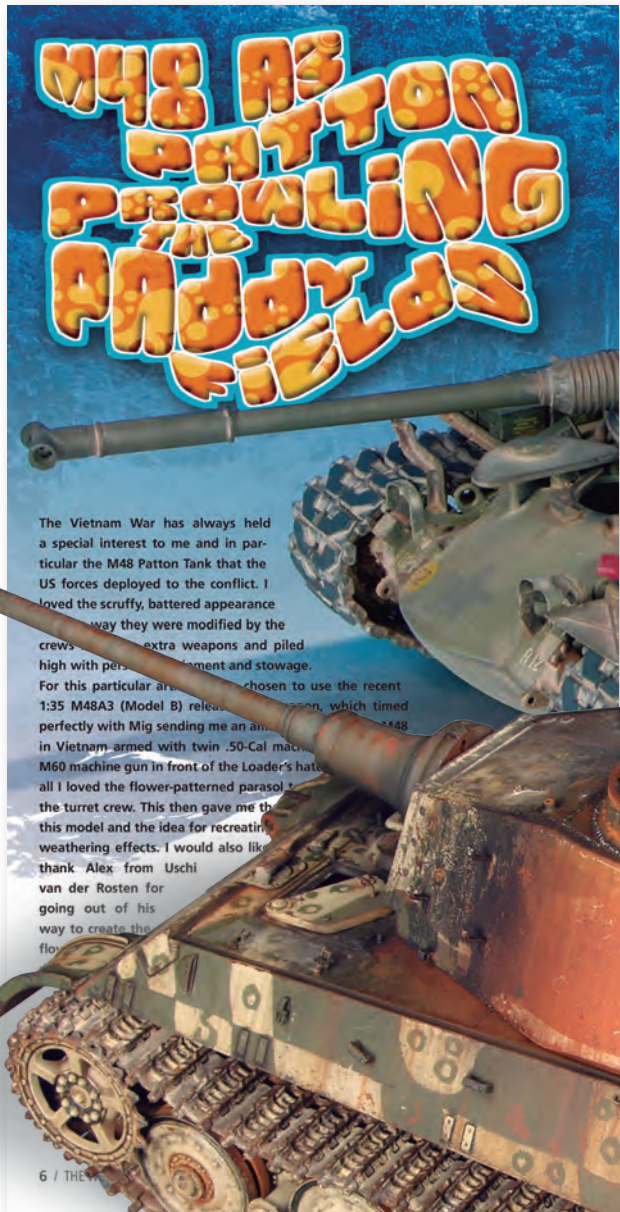


This book explains in depth in an educational and visually easy to follow format, how to apply various light effects on your models, including the famous modulation technique. Through its 106 pages, hundreds of photos and numerous diagrams show how to obtain more from your models and give them more life and personality. To do this the authors Javier Soler and Mig Jimenez explain 4 different ways of painting lighting effects on our models: color modulation, zenithal light, spot light, and illumination by panels.



THE WEATHERING MAGAZINE

The Weathering Magazine has become the greatest revolution in the modelling community during this past year. This provocative magazine is the ultimate resource for learning essential weathering techniques. Each issue presents a single theme covering such issues as Mud, Rust, Dust, Chipping are explored. Every issue includes information about products, applications, techniques, comparisons and a real photo galleries where the modeller can find the inspiration for their next models. This type of magazine is unique in the world - totally different from everything that has come before. This magazine is accompanied by the most attractive girls who show us with their sexiest clothes; the secrets of modeling. If you have courage, and are eager to see and learn new and exciting things in the modeling, try The Weathering Magazine. Modelling will never be the same.



The Vietnam War has always held a special interest to me and in particular the M48 Patton Tank that the US forces deployed to the conflict. I loved the scruffy, battered appearance they way they were modified by the crews with extra weapons and piled high with personal equipment and stowage. For this particular article I chose to use the recent 1:35 M48A3 (Model B) release from AMMO OF MIG, which timed perfectly with Mig sending me an email that they had a M48 in Vietnam armed with twin .50-Cal machine guns and a M60 machine gun in front of the Loader's hatch. I all I loved the flower-patterned parasol on the turret crew. This then gave me the idea for this model and the idea for recreating weathering effects. I would also like to thank Alex from Uschi van der Rosten for going out of his way to create the flower pattern.

6 / THE

A.MIG-4500 THE WEATHERING MAGAZINE Issue 1 RUST



RUST

The first issue is dedicated to rust and shows many different methods of application on ships, tanks, tracks, civil vehicles and much more. Also, this first issue contains many visual references and reviews of a wide range of products related to this subject. Finally it includes a report covering the 2012 Shizuoka show.

As something refreshing, a new character will guide the modeller in each subject changing our hobby for a more fun and entertaining experience.

Contents:

- *Rusting a Paper Panzer / Mig Jimenez
- *Raw Steel Plate / Mr. Scratchmod
- *Bare Metal Armour / Martin Kovác
- *Weathering a Box Car / John Murphy
- *Rust on the High Sea / Fran Romero
- *Old Metal Fixtures & Fittings / John Murphy
- *Weathering White Metal Tracks / Mig Jimenez
- *Small Chips & Rust Stains / John Murphy
- *M60A1 "Less is More" / Chris Jerrett
- *Sand Blown Old Rusty Steel / Marc Reusser
- *Rust Reference Photos
- *Color Profiles / Claudio Fernández
- *Rusty Beetle / David Martí
- *Choose the Right Products
- *Postcards From the World / Shizuoka

A.MIG-4501 THE WEATHERING MAGAZINE Issue 2 DUST, DIRT & EARTH



DUST, DIRT & EARTH

This time we will study the effects of Dust and Dirt using a wide range of products and painting techniques demonstrated by the worlds best modelers. The magazine explains in depth how to apply these effects on all types of models including figures, helicopters, trains, sci-fi and of course tanks. We will also enjoy again the company of our workmate Akatsiya. The modeler will want to collect each issue to create a bibliography of techniques, effects, references and inspiration. If you enjoyed FAQ2, then this is the magazine that you are searching for.

Contents:

- *Chopper Dsuting / John Murphy
- *Panzer Grey & Dust / Carlos Cuesta
- *Space Dust / Lincoln Wright
- *Humbrol Dust / Carlos Cuesta
- *Mucking up a Merkava / Chris Jerrett
- *Dusty Cobblestone Road / John Murphy
- *A Dusty Diorama / Rubén González
- *Dust Brings a Tanker to Life / César Oliva
- *Dusting Tiger Tracks / Carlos Cuesta
- *Airbrushing Dust & dust Washes / John Murphy
- *VK 4502 Dust & Dirt / Mig Jimenez
- *M1117 Guradian / Martin Kovác
- *Dust Reference Photos
- *Br39 Before & After / Mig Jimenez
- *Dusty Ground / Rodrigo Hernández Cabos
- *Color Profiles / Claudio Fernández
- *Postcards From the World / Afghanistan

A.MIG-4502
THE WEATHERING MAGAZINE
 Issue 3 CHIPPING



CHIPPING

In this issue we will describe in-depth the weathering effects, known as Chipping with the help of a wide range of products and the latest painting techniques, such as sponge, salt, specialist chipping products, brush, and masking fluids. As always these techniques will be demonstrated by some of the most talented modellers from around the World. This issue will explain these effects on a diverse range of modelling subjects, from accessories for figures to science-fiction and from old wooden horse-drawn carts to modern "big-rig" trucks and construction machines and of course a selection military vehicles and aircraft. As always the beautiful Akatsya will escort us through the features. The Weathering Magazine is the perfect painting reference source to collect and create the most comprehensive guide worthy of adding to any modelling reference library.

Contents:

- *Diamon Reo Tractor / Rick Lawler
- *Type 69 II C / Mig Jimenez
- *Popular Chipping Effects / John Murphy
- *Popular Techniques / Carlos Cuesta
- *Micro Paint-Chipping / Wu Bayin
- *Using Worn Effects / Jamie Haggio
- *Nakajima KI-84 / José L. Echaide
- *Excavator Extreme Weathering / John Murphy
- *Chipping Modern Armour / Chris Jerrett
- *Hairspray Steyr / John Tolcher
- *Scratching & Chipping Accesories / César Oliva
- *Sci-fi Scratching / Lincoln Wright
- *Wooden Cart / David Martí
- *Peeling Wood Effects / Chuck Doan
- *Chipping the Focke out of it / Jamie Haggio
- *Chipping the Barn Door / Gunnar Bäumer
- *Basic Chipping on a Drilling / Lester Plaskitt
- *Salt Technique / David Martí
- *Chipping Reference Photos
- *Postcards From the World / Greece

A.MIG-4503
THE WEATHERING MAGAZINE
 Issue 4 ENGINES, FUEL & OIL.



ENGINE, FUEL & OIL.

This time we will study the effects of Dust and Dirt using a wide range of products and painting techniques demonstrated by the worlds best modelers. The magazine explains in depth how to apply these effects on all types of models including figures, helicopters, trains, sci-fi and of course tanks. We will also enjoy again the company of our workmate Akatsiya. The modeler will want to collect each issue to create a bibliography of techniques, effects, references and inspiration. If you enjoyed FAQ2, then this is the magazine that you are searching for.

Contents:

- *Chopper Dsuting / John Murphy
- *Panzer Grey & Dust / Carlos Cuesta
- *Space Dust / Lincoln Wright
- *Humbrol Dust / Carlos Cuesta
- *Mucking up a Merkava / Chris Jerrett
- *Dusty Cobblestone Road / John Murphy
- *A Dusty Diorama / Rubén González
- *Dust Brings a Tanker to Life / César Oliva
- *Dusting Tiger Tracks / Carlos Cuesta
- *Airbrushing Dust & dust Washes / John Murphy
- *VK 4502 Dust & Dirt / Mig Jimenez
- *M1117 Guradian / Martin Kovác
- *Dust Reference Photos
- *Br39 Before & After / Mig Jimenez
- *Dusty Ground / Rodrigo Hernández Cabos
- *Color Profiles / Claudio Fernández
- *Postcards From the World / Afghanistan

A.MIG-4504
THE WEATHERING MAGAZINE
 Issue 5 MUD



MUD

This issue describes in-depth the techniques to create mud effects in all forms and environments. As always these techniques will be demonstrated by some of the most talented modellers from around the World. Explanations will cover a diverse range of modelling subjects, from figures to rally cars and of course a selection of military vehicles and science fiction subjects. Also a new section will cover paint on small scale vehicles for wargames. Finally a new and pretty character will escort us through the features, we are sure you will not want to miss. The Weathering Magazine is the perfect painting reference source to collect and create the most comprehensive guide worthy of adding to any modelling reference library.

Contents:

- *Spanish Mudderland / Chris Jerrett
- *Muddy Ameise Robot / Alexandre Duchamp
- *WWI Stormtrooper / Rick Lawler
- *Wet & Dry Mud on my Leopard 2A5 / Fabrizio Pincelli
- *Mercury Cougar / Clay Kemp
- *Splashes & Splatter / John Murphy
- *A Tiger with Two Tales/ Przem Mrozek
- *Mud over my S.A.F.S. / Lincoln Wright
- *Autumn Road / Rubén González
- *Flames of Weathering / Ruben Torregrosa
- *Muddy Industrial Locomotive / Marc Reusser
- *Soviet Spirit / Wu Bayin
- *Mud Reference Photos
- *Postcards From The World

A.MIG-4505
THE WEATHERING MAGAZINE
 Issue 6 KURSK & VEGETATION



KURSK & VEGETATION

Finally on sale the much anticipated issue 6 of The Weathering Magazine. We can finally enjoy an issue that will cover in depth the techniques needed to set our models in the largest tank battle of World War II, Kursk. From Tigers to Stuk as and the legendary T-34. Furthermore, this issue has 24 additional pages to learn and enjoy making vegetation for our dioramas and vignettes. As always, these techniques will be explained by the best modelers in the world. The Weathering Magazine is the perfect paint reference guide to collect and create the largest encyclopedia in a modeler's library, the essential reference for any modeler.

Contents:

- *Kursk History of Failures / Mig Jimenez
- *Buried Alive / Rick Lawler
- *Soviet Steel Pride / Serguiz Peczeck
- *Tank Buster / Javier López de Anca & Ricardo Abad Medina
- *Tigers in the Dust / Pere Valls
- *Heavy Hitter / Joaquín García Gázquez
- *ML-20 152 MM Howitzer Diorama / John Murphy
- *Gardening The Backyard / Rubén González
- *Deep Roots Scale Trees / Javier Soler
- *A Rolling Stone Gathers No Moss / Marc Reusser
- *Nuclear Autumn in Pripjat / Alexandre Duchamp
- *Trucks, Trash and treasures / Chulho Yoo
- *Flames of Weathering / Rubén Torregrosa
- *Color Profiles / Claudio Fernández
- *Choose the Right Products Vegetation

A.MIG-4506
THE WEATHERING MAGAZINE
 Issue 7 SNOW & ICE



SNOW & ICE

The theme of snow and ice is covered in depth with all of the techniques needed to set our models in a winter environment with plenty of Ice and Snow. From how to make a spectacular frozen diorama to adding subtle snow effects on a T34. Furthermore, this issue has 16 additional pages to learn and enjoy even more. As always, these techniques will be explained by the best modelers in the world. The Weathering Magazine is the perfect paint reference guide to collect and create the largest encyclopedia in a modeler's library.

Contents:

- *Stug III _ Winter Warrior / *Sergiusz Peczeck*
- *Dragon Junkers JU 88-4 / *Jamie Haggio*
- *Minoga / *Jean-Bernard André*
- *Snowwagen - SDKF 263 / *Alex Clark*
- *Sailing the Frozen Seas / *Rick Lawler*
- *Bandit at Five / *Aitor Azcue*
- *Chaos Frozen in Time / *Diego Quijano*
- *Grober Hund (Snow Dog) / *Kevin Derken*
- *Snow Plow / *Clay Kemp*
- *122 mm. Cold Steel / *John F. Steinman*
- *Conrail Expenn Central Boxcar / *Jeff Meyer*
- *Winter Warrior - Waffen-SS Grenadier / *Gunther Steinberger*
- *Choose the Right Products
- *How to Make Snow an Ice / *Rodrigo Hernández Cabos*
- *Object 279 "cold warrior" / *Domingo Hernández*
- *Flames of Weathering / *Rubén Torregrosa*
- *Postcards from the World Malaga (Spain)

A.MIG-4507
THE WEATHERING MAGAZINE
 Issue 8 VIETNAM



VIETNAM

Issue 8 of The Weathering Magazine is now available - the Vietnam Issue. Within the pages we cover a wide range of topics and techniques all with the theme of Vietnam. You will learn how to create a spectacular jungle diorama and how to capture the characteristic soul colors for this theater. Matter of fact, we have so much to offer that this issue has 8 additional pages full of tip and techniques - more of everything for you to enjoy. As always, the best modelers in the world will explain these techniques. The Weathering Magazine is the perfect paint reference guide to collect and create the largest encyclopedia in a modeler's library; the essential reference for any modeler.

Contents:

- *SdKfz 263 / *Alex Clark*
- *M48 A3 Patton Prowling the Paddy Fields / *John Murphi*
- *NVA Steel / *Iain Hamilton*
- *Vietnam Soil / *Iain Hamilton*
- *Nam Officers / *Vladimir Demchenko*
- *Shark Attack / *Yang Yu-Pei*
- *Call of the JUNGLE / *Vladimir Demchenko*
- *F-4B Phantom II Death Rattlers - VMFA-323 / *Jamie Haggio*
- *MIG 17 / *Jamie Haggio*
- *The Reflective Tourist / *Jean-Bernard André*
- *Full Metal Mech / *Oishi*
- *Choose the Right Products / *Elizabeth Wiese*
- *Flames of Weathering / *Rubén Torregrosa*
- *Postcards from the World / *Sweden & Slovakia*

A.MIG-4508
THE WEATHERING MAGAZINE
 Issue 9 K.O. AND WRECKS



K.O. AND WRECKS

The only magazine in the world devoted exclusively to the weathering effects and paint in general for all kinds of modeling. This issue is dedicated to destroyed, abandoned, and sunken vehicles. The best modellers in the world will offer a repertoire of exceptional examples and they explain with detailed step by step process, all the newest tricks and techniques to get your models represent similar conditions. From a totally abandoned "Walker" futuristic robot, a wooden sunk boat, a Tiran 5 absolutely burned or a jet fighter abandoned in the open. But you can also discover how to burn impacts and effects on a King Tiger or a weather a train wagon full of graffiti. TWWM is a collectible magazine, 64 pages, printed on high quality glossy paper and full of useful items for any field of model. Available in 7 different languages, this is the most international magazine in the world.

Contents:

- *Crestfallen / Kevin Derken
- *The art of destruction / Scratchmod
- *Thunderstruck / Jamie Haggio
- *Burn out effects / Mig Jiménez
- *Impact, wrecks & rust / Sergio Villén & Mig Jiménez
- *Remembering 4th of july / Jonas Dahlberg
- *Author's gallery / Jonas Dahlberg
- *Twisted fate / Rick Lawler
- *Rail art / Gary Christensen
- *Author's gallery / Shigeyuki Mizuno
- *Flames of weathering / Rubén Torregrosa

A.MIG-4509
THE WEATHERING MAGAZINE
 Issue 10 WATER



WATER

The only magazine in the world devoted exclusively to the weathering effects and paint in general for all kinds of modeling. This issue is dedicated to water and moisture. The best modellers in the world will offer a repertoire of exceptional examples and they explain with detailed step by step process, all the newest tricks and techniques to get your models represent similar conditions. From ships at offshore to tanks out of the water or crossing rivers, seaplanes, standing water, streams and much more. TWWM is a collectible magazine, 64 pages, printed on high quality glossy paper and full of useful items for any field of model. Available in 7 different languages, this is the most international magazine in the world.

Contents:

- *Beneath the Baltic / Chris Flodberg
- *Author's Gallery / Chris Flodberg
- *Rotten to the core / Iain Hamilton
- *Splish Splash Lav taking a bath / Sergio Fenoy
- *Reflections / Jean-Bernard André
- *The crossing / Diego Quijano
- *A country lane / Rodrigo Hernández Cabos
- *The hunters, the lovers and the weeping / Javier Soler
- *Puddle jumper / Rick Lawler
- *Author's gallery / Jean-Bernard André
- *Postcards from the world / Malmö

DIGITAL VERSION

THE WEATHERING MAGAZINE

Available on the App Store, Google play, PC & Mac.

Available on **Ipad App**

Available on **Android App**

Available **Online** on **Windows** and **Mac** computers.

Available **Offline** app on **Windows** computers.



ANDROID



As it could not be any other way we have adapted our magazine to new trends in publishing. Born therefore the digital version. It is the perfect complement that will give greater freedom to the power handle in multiple devices and will allow you to make use of features that the physical magazine can not (large images, direct link with additional information,...). A project that we will expand with new functionalities, thereby increasing the usability of the publication.

info, sales & support at:

www.theweatheringmagazine.com



Merchandising



A.MIG-8000

T-SHIRT

Corporate STAFF AMMO T-shirt, perfect to wear at model shows or events. 100% cotton and available in size M, L, XL and XXL. Limited edition.



A.MIG-8007 AMMO SWEATSHIRT

Protect yourself from the winter cold while you make models or attend shows with this sweatshirt. 80% cotton +20% poliester and available in sizes S, M, L, XL, XXL and 3XL. Limited edition. For better conservation we recomend a cold wash, don't use dryer and iron on reverse side.

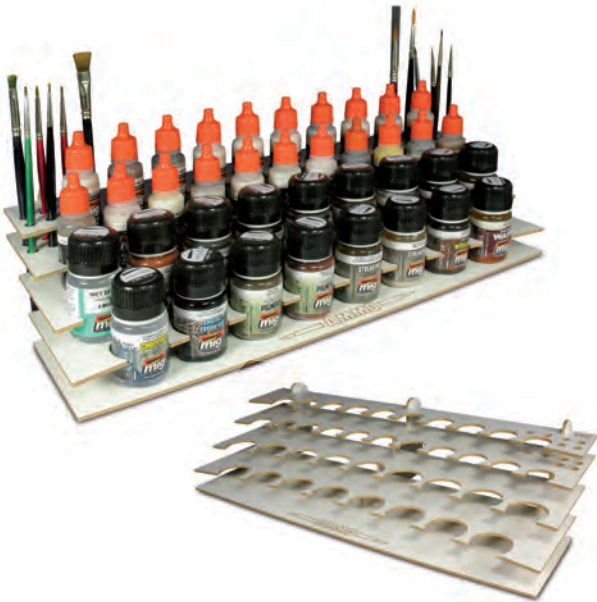




A.MIG-8001 WORKBENCH ORGANIZER

The easiest way to organize paints and brushes in your workbench for the specific requirements of each project. Workbench Organizer includes 12 holes for brushes, 21 spaces for 17 mL acrylic jars (25 mm width) and 17 holes for 35 and 60 mL jars (35 mm width).

Dimensions: 14.5 cm (depth) x 9.5 cm (tall) x 40 cm (high) Easy to assembled in just few second. Lacqued in white color.



A.MIG-8002 MINI WORKBENCH ORGANIZER

The most convenient way to organize the paints and brushes with which we are working at the time. This small organizer allows us to put 5 jars with which we are going without the risk of rolling over, either 17 or 35 mL interchangeably. It also allows you to place a plastic cup or bottle of 100 mL and 10 brushes. Its small size makes it perfect to help paint anywhere no matter how small the space available is. A perfect solution also for travel or modeling meetings.



A.MIG-8005 17 mL AMMO STORAGE SYSTEM

Shelves optimized to store 60 cans of 17 mL in the smallest possible space. The bottles are stored at an angle minimizing its size and allows us to find our colors at a glance. Size 40 x 30 x 6.5 cm. It can be placed on a table or hung on the wall. Easy to assemble in minutes. Requires white glue not included.



A.MIG-8006 35 ml AMMO STORAGE SYSTEM

Shelves optimized to store 45 cans of 35 mL in the smallest possible space. The bottles are stored at an angle minimizing its size and allows us to find our colors at a glance. Size 40 x 30 x 6.5 cm. It can be placed on a table or hung on the wall. Easy to assemble in minutes. Requires white glue not included.



A.MIG-8003 STAINLESS STEEL PAINT MIXERS

This set includes more than 80 stainless steel balls perfect for use as agitators in any paint. Add a pair to your jars and paint work will be much easier, faster, and effective. To make a paint reach its optimum performance, it is necessary that all components are thoroughly mixed. Valid for acrylics, lacquers, enamels and any other type of liquid paint. Will not rust or alter the color.



A.MIG-8004 SPARE JARS FOR MIXES

Save your paint mixtures in these jars easily and effectively. The pack contains 4 boxes of 17 mL ready to use. Each jar includes a steel agitator to help mix the colors and a dispenser for easy use.



A.MIG-8008 ALUMINIUM PALLET (6 WELLS)

Aluminum palette with 6 wells.

It is resistance to all types of paints and chemicals making this a fundamental tool ideal for the workbench of any modeller.



A.MIG-8009 ALUMINIUM PALLET (10 WELLS)

Aluminum palette with 10 wells.

It is resistance to all types of paints and chemicals making this a fundamental tool ideal for the workbench of any modeller.



A.MIG-8100 GERMAN EAGLE CANVAS LIMITED EDITION

The stone German eagle represents the dark era of the German Empire during years 30's and 40's. A time which also represents the evolution of machines and technology that provided the development of tanks, aircraft, and the machinery of war. Features a German eagle with a retro aesthetic in warm tones.



A.MIG-8101 USA EAGLE CANVAS LIMITED EDITION

Perhaps the US Bald Eagle is the world's most famous icon. The '40s and '50s were a time of glory and show of force in the United States of America. This image evokes the victory in Europe and the war in Korea. The USA has created an aesthetic and a style that marked the history of the military industry and pop art.



A.MIG-8102 RUSSIAN EAGLE CANVAS LIMITED EDITION

Undoubtedly, at present, the most representative image is the popular Russian double headed eagle. The golden eagle is the symbol of a nation that has managed to renew and modernize. Tanks, planes, and helicopters are symbolic for all lovers of Russian technology represented by this great image.





A.MIG-8050

WOODEN BASE 28 x 16 x 5

Base in bayous wood, light but strong. Its glossy black lacquered finish will highlight and facilitate the exposure of any model.

Dimensions 28 x 16 x 5 centimeters. Perfect for large vehicles and scenes.



A.MIG-8051

WOODEN BASE 24 x 15 x 5

Base in bayous wood, light but strong. Its glossy black lacquered finish will highlight and facilitate the exposure of any model.

Dimensions 24 x 15 x 5 centimeters. Perfect for medium vehicles and small scenes.



A.MIG-8052

WOODEN BASE 17 x 12 x 4

Base in bayous wood, light but strong. Its glossy black lacquered finish will highlight and facilitate the exposure of any model.

Dimensions 17 x 12 x 4 centimeters. Perfect for small vehicles of any kind and small scenes or vignettes.



A.MIG-8053

WOODEN BASE 12 x 8 x 3

Base in bayous wood, light but strong. Its glossy black lacquered finish will highlight and facilitate the exposure of any model.

Dimensions 12 x 8 x 3 centimeters. Perfect for small vehicles and vignettes.



PAINT RACK EXPOSITOR

- A.MIG-8150** Acrylic full
- A.MIG-8151** Acrylic empty
- A.MIG-8152** Enamel full
- A.MIG-8153** Enamel empty

Finally we have available the long awaited retail racks to easily organize and display AMMO points in your business. We have designed it considering all your needs in the best way possible:

- Provides an attractive design that will appeal to your customers.
- Its rear includes very useful information to help you choose the products and answer questions from your customers.
- Display rack is plastic so it is lightweight, and easy and cheap to transport or ship.
- Its removable trays allow it to be removed easily for stocking and accurate inventory.

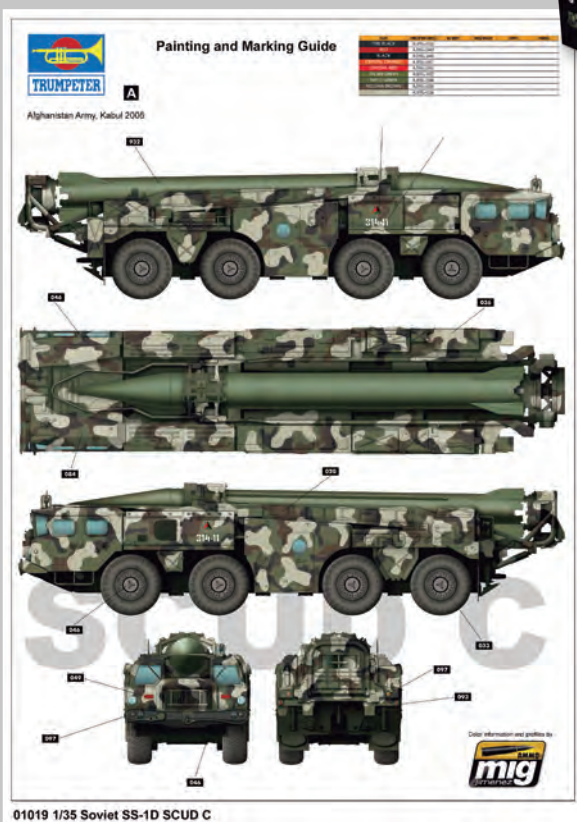


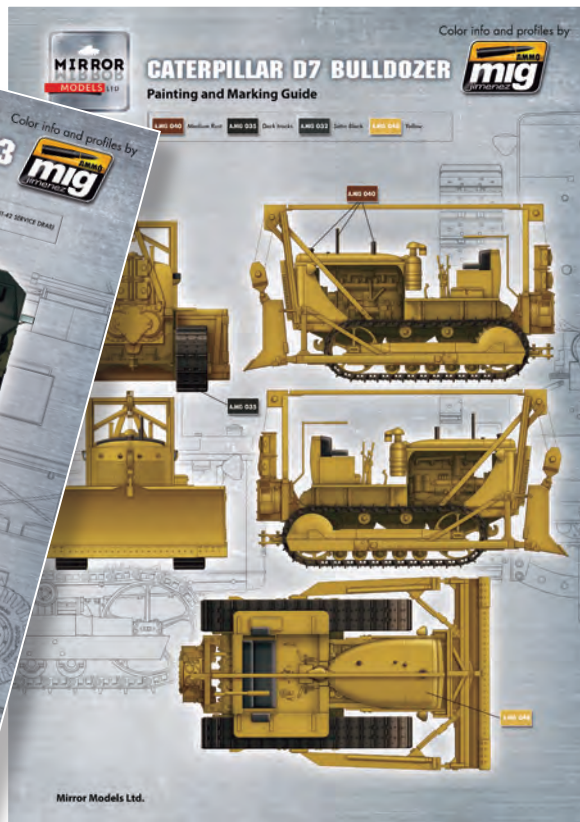
Enamel Weathering Version



AMMO collaborates with several reputable plastic brands developing color instructions for kits. These plastic brands have chosen AMMO as a partner because of our accuracy and deep research of colors as well as for our high quality paint products. Also AMMO is always developing new colors to fit plastic market

trends, such as WW I vehicles, Russian modern vehicles and others. Our research and collaboration helps modelers choose the right color easily and accurately. Here you can see some examples of color sheets from 2014.





KRAZ 6322

Color info and profiles by



Painting and Marking Guide

- L.MIG 066
- L.MIG 067
- L.MIG 069
- L.MIG 033
- L.MIG 933
- L.MIG 087
- L.MIG 034

Ukrainian Army



TAKOM KRAZ-6446 TRACTOR w/CHMZAP-5247G SEMI-TRAILER Ref. 2019



ST. CHAMOND

LATE VERSION

Color info and profiles by



Painting and Marking Guide

- L.MIG 046 Olive Green
- L.MIG 044 Brown Earth
- L.MIG 062 French Blue
- L.MIG 033 Dark Black
- L.MIG 043 Gun Metal
- L.MIG 041 Dark Rust
- L.MIG 060 Pale Grey
- L.MIG 041 Sand Yellow



TAKOM St. Chamond Late version Ref. 2012



GOOD TECHNIQUES, GOOD RESULTS

by Rick Lawler

At AMMO, our primary goal is to help modelers achieve their best results whether that is through the products that we produce or by explaining techniques. Great painting results cannot be achieved, however, unless you have a good foundation and understanding of some basic principles. In this tutorial I will point out a few common mistakes and then explain a few good painting habits that will help you achieve excellent results using AMMO acrylic primers and paints.



1

The first step in any painting session is to be sure that your paints are thoroughly mixed by shaking or stirring the paints within the bottle. This step is so critical that AMMO is now adding a small metal ball into every bottle to aid in the mixing process. (Found in the Yellow Cap Bottles)



3

So now we know that we are facing two obstacles to a nice paint job, (1) Too much Air Pressure, (2) Surface Tension from the untreated plastic. First, I begin by regulating my air pressure using the bleed-off valve on my compressor. For this demonstration I have set my pressure at 18 PSI, you should experiment to find what pressure works best for you based upon type of equipment that you use. Now we are ready to apply a primer layer – here's how we do it and why we do it;

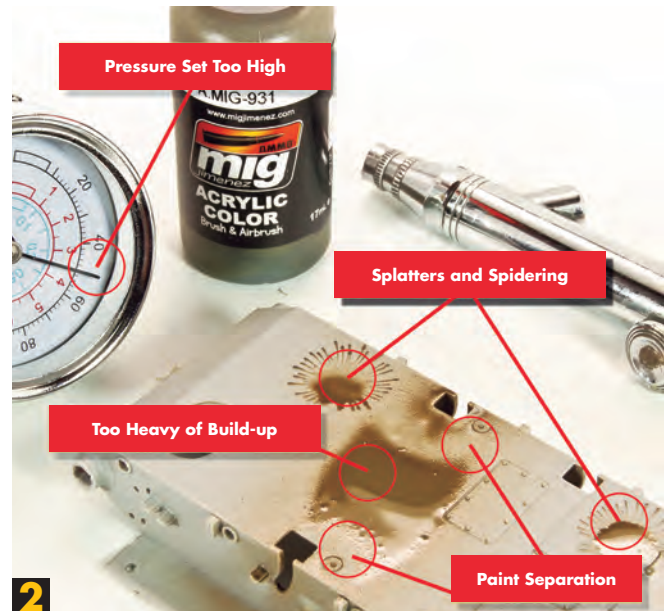
- **Light First Coat** – When applying the primer it is very important that you build in layers. The first layer is just a VERY light spray, just enough to tint the surface. Allow this first layer to completely dry before continuing with a second layer of primer.

- **Breaking the Surface Tension** – This first layer is working hard right now to break the surface tension that develops between the slick, untreated plastic surface and the water based paints. Primers are specially formulated to break the tension and adhere to the surface, but to do their job they must be applied in thin layers.



4

Once the first layer has dried I am able to apply a second primer layer. This second layer can be applied a little heavier for better coverage. Keep in mind that the purpose of primer is simply to prepare the surfaces for paint, so light coverage is preferred so as not to build-up too much thickness and obscure surface details.



2

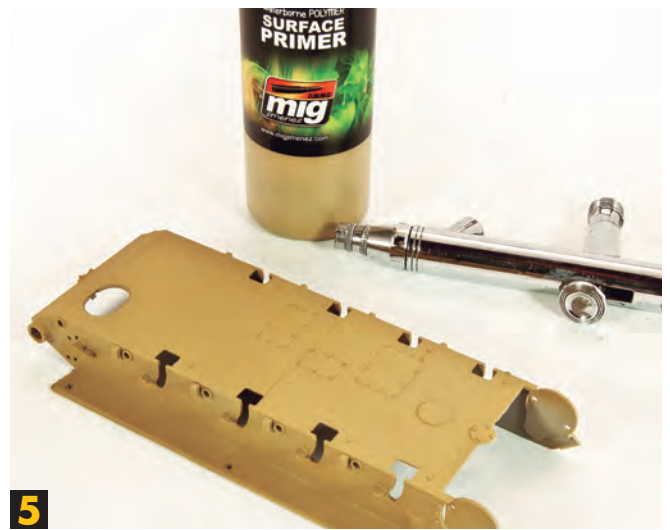
Of course when we have completed building our models we are excited to begin painting and so we begin painting right away without proper thought or preparation – and the results are often poor. In this photo I have replicated many common issues that modelers experience when painting and will describe why it happens and what can be done to prevent it.

- **Air Pressure** – Most modern air compressors can be adjusted to regulate the pressure to your airbrush. In this photo my compressor is giving me 50psi of pressure which is a lot and leads to a loss of control over my paint flow (too much paint) and my paint pattern (too wide of spray).

- **Splatters and Spidering** – This is a common result of too much air pressure. Even a light tap of the airbrush trigger will result in a large amount of paint being distributed all at once. The splatter is made worse by holding the nozzle of the airbrush too close to the surface in an attempt to control the width of the spray pattern.

- **Too Heavy of Build-up** – Again, the high air pressure is a contributing factor here. But, now we are also seeing the effects of surface tension or the contraction of the paint when it is applied upon the slick plastic surface – much like combining oil and vinegar. This is a common problem when using acrylic or water based paints; the solution is to first lay down a primer layer before the paint.

- **Paint Separation** – Again, the primary result of the surface tension between the untreated plastic surface and the water-based paint.

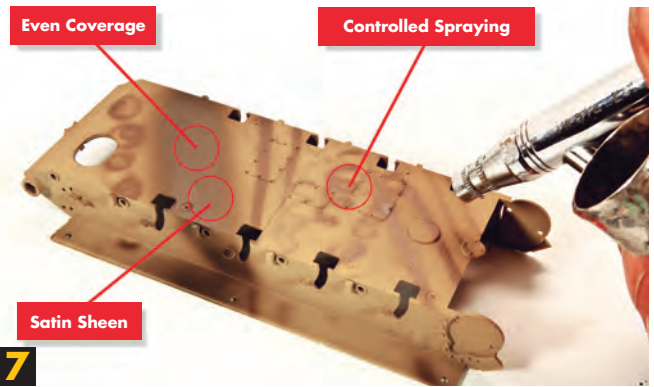


5

Above, I spoke about how the primer is necessary to break surface tension at the initial stages between the plastic and the paints. Equally important is that the primer layer is a matte finish, providing an ideal surface for the paints to adhere thus increasing their durability. In this example the primer process finishes with the third layer. You can see the smooth, overall coverage while the surface details are very much still evident.



6 Now with the primer in place and the pressure lowered it is time to paint. I am using an Iwata Dual Action Airbrush; note the distance of the airbrush nozzle to the surface is approximately 3" inches for an overall spray. I will move my nozzle closer to the surface when applying fine lines and details. As with the primer, I will work layer by layer to achieve full coverage.



7 It looks like a mess, but by doing a test on a piece of material you can make sure that you have the proper settings for the type of paint and equipment that you will be using – and for the work that you are doing. In this case, I can see that I have enough pressure to achieve even coverage overall in a broad spray pattern. I also see that my pressure is set to a point that allows me to move in closer for finer lines and detail work. A nice balance.



8 Another important reason to use a good primer is the fact that many models are constructed using a number of different materials; plastic, resin, photo etch, string, foils, etc. Primers are especially necessary in these instances to unify all of these varieties of surfaces for the decorative paints.

I can tell that the matte finish of the primer is working well as the paints are sticking immediately where applied, no splatters or separation. AMMO paints are designed to dry with a satin sheen which can be seen reflected in this photo. The satin sheen is ideal and recommended for use with the AMMO enamel weathering products.



9 In the "old" days, primer came to us in one color- grey. But no more! Now primers are available in a variety of colors which is very helpful in that not only can we get good surface preparation, but we can also begin the painting process by laying foundation colors that will complement our final finish. Because the Me-109 will have a lighter colored camouflage pattern finish, I have chosen to spray the fuselage using a white primer as this will not conflict with the light camo colors. However, with the T34 I have a much darker and more aggressive pattern in mind so I have chosen to use black primer in order to help pre-shade and emphasize the shadows.



10 Still using the colored primers, the panel lines on the Me-109 are airbrushed. Panel line shadowing is not new, but being able to do it at the primer stage ensures that our shadows are at the deepest layer of coverage. On the T34 I am getting a little trickier and have chosen to highlight certain panels and edges using the yellow primer. The contrast between the black and yellow base coloring will add subtle visual interest to the final presentation.



11 The green color is applied in thin layers, slowly building the color. I intentionally stop before achieving complete coverage over the primer layers. As you can see, even at this early stage the black and yellow primer layers have added subtle shading and color interest over the entire model.

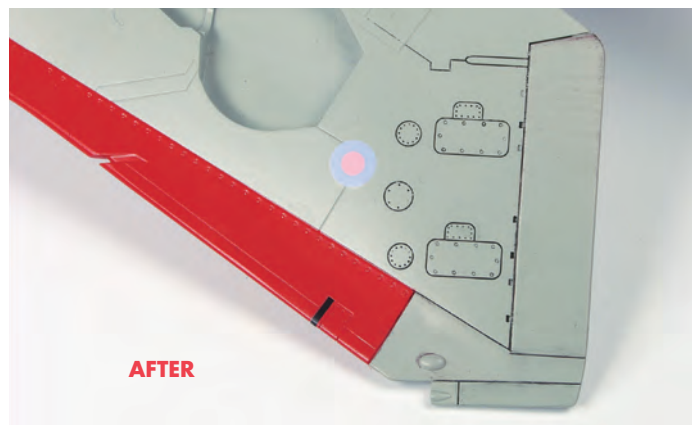
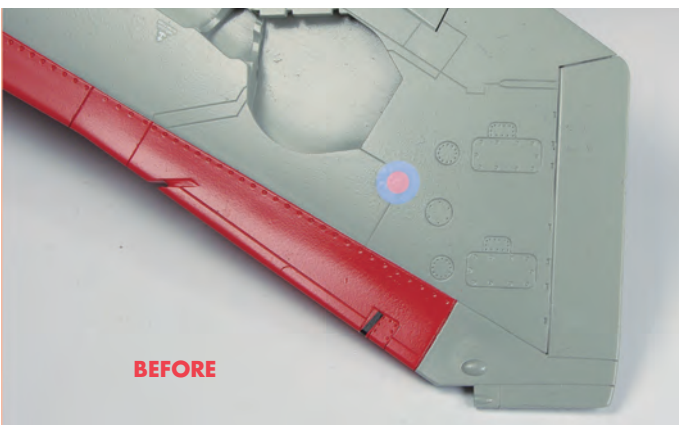
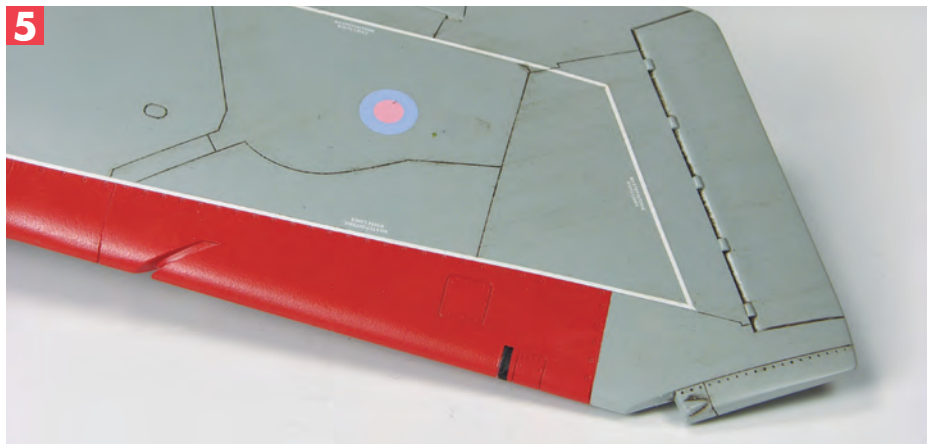
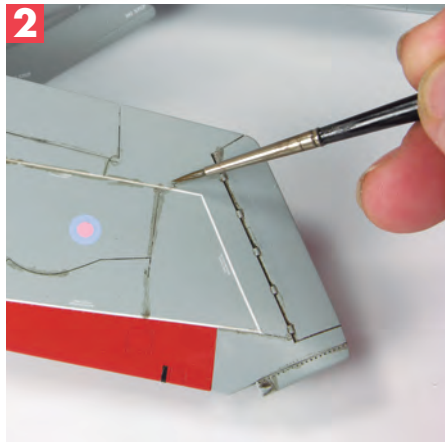


12 For reference, the scale of this model is 1/48th. As a reminder, my pressure is at 18psi, same settings as was on my test piece. I continue by adding the narrower camouflage stripes to the T34 without difficulty – the adhesion is good, no splatters and no surface tension problems.



13 Finally, I add a little bit of quick color to the Me-109 fuselage. A light layer of grey color overall does a nice job of fading the panel line shading into the background. Again, note the contrasting satin sheen along the top edge.

HOW TO USE PANEL LINE WASH





... AND STREAKING EFFECTS



A
Apply the streaking



B
Blend with a brush



C
Splits with toothpick and brush



Final results





AMMO of Mig Jimenez, S.L.
ESTELLA - SPAIN
info@migjimenez.com



/MigJimenez



www.migjimenez.com